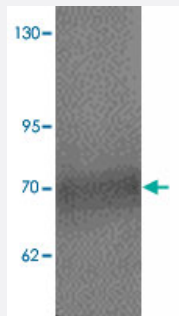


ATAD3A polyclonal antibody

Catalog # PAB19405 Size 100 ug

Applications



Western Blot (Cell lysate)

Western blot analysis of ATAD3A in Daudi cell lysate with ATAD3A polyclonal antibody (Cat # PAB19405) at 1 ug/mL.



Immunocytochemistry

Immunocytochemical staining of Daudi cells with ATAD3A polyclonal antibody (Cat # PAB19405) at 20 ug/mL.

Specification

Product Description	Rabbit polyclonal antibody raised against synthetic peptide of ATAD3A.
Immunogen	A synthetic peptide corresponding to 19 amino acids near N-terminus of human ATAD3A.
Host	Rabbit
Reactivity	Human, Mouse, Rat
Specificity	ATAD3A antibody is predicted to not cross-react with other ATAD protein family members. At least two isoforms are known to exist.
Form	Liquid

Purification	Peptide affinity purification
Concentration	1 mg/mL
Recommend Usage	Western Blot (1 ug/mL) Immunocytochemistry (20 ug/mL) The optimal working dilution should be determined by the end user.
Storage Buffer	In PBS (0.02% sodium azide)
Storage Instruction	Store at 4°C for three months. For long term storage store at -20°C. Aliquot to avoid repeated freezing and thawing.
Note	This product contains sodium azide: a POISONOUS AND HAZARDOUS SUBSTANCE which should be handled by trained staff only.

Applications

- Western Blot (Cell lysate)

Western blot analysis of ATAD3A in Daudi cell lysate with ATAD3A polyclonal antibody (Cat # PAB19405) at 1 ug/mL.

- Immunocytochemistry

Immunocytochemical staining of Daudi cells with ATAD3A polyclonal antibody (Cat # PAB19405) at 20 ug/mL.

- Enzyme-linked Immunoabsorbent Assay

Gene Info — ATAD3A

Entrez GeneID	55210
Protein Accession#	Q9NVI7
Gene Name	ATAD3A
Gene Alias	FLJ10709
Gene Description	ATPase family, AAA domain containing 3A
Gene Ontology	Hyperlink
Gene Summary	ATAD3A and ATAD3B (MIM 612317) are mitochondrial membrane proteins that contribute to the stabilization of large mitochondrial DNA (mtDNA)-protein complexes called nucleoids (He et al., 2007 [PubMed 17210950]).[supplied by OMIM]
Other Designations	OTTHUMP00000000596