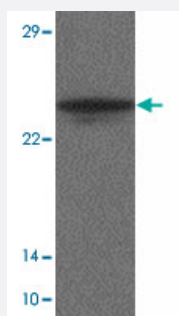


# TMEM204 polyclonal antibody

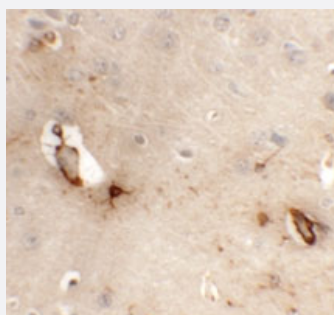
Catalog # PAB19394      Size 100 ug

## Applications



### Western Blot (Tissue lysate)

Western blot analysis of TMEM204 in human brain tissue lysate with TMEM204 polyclonal antibody (Cat # PAB19394) at 1 ug/mL.



### Immunohistochemistry

Immunohistochemical staining of mouse brain cells with TMEM204 polyclonal antibody (Cat # PAB19394) at 5 ug/mL.

## Specification

<b>Product Description</b>	Rabbit polyclonal antibody raised against synthetic peptide of TMEM204.
<b>Immunogen</b>	A synthetic peptide corresponding to 17 amino acids near C-terminus of human TMEM204.
<b>Host</b>	Rabbit
<b>Reactivity</b>	Human, Mouse, Rat
<b>Specificity</b>	At least two isoforms of TMEM204 are known to exist; this antibody will recognize both isoforms.
<b>Form</b>	Liquid
<b>Purification</b>	Peptide affinity purification

Concentration	1 mg/mL
Recommend Usage	Western Blot (1 ug/mL) Immunohistochemistry (5 ug/mL) The optimal working dilution should be determined by the end user.
Storage Buffer	In PBS (0.02% sodium azide)
Storage Instruction	Store at 4°C for three months. For long term storage store at -20°C. Aliquot to avoid repeated freezing and thawing.
Note	This product contains sodium azide: a POISONOUS AND HAZARDOUS SUBSTANCE which should be handled by trained staff only.

## Applications

- Western Blot (Tissue lysate)

Western blot analysis of TMEM204 in human brain tissue lysate with TMEM204 polyclonal antibody (Cat # PAB19394) at 1 ug/mL.

- Immunohistochemistry

Immunohistochemical staining of mouse brain cells with TMEM204 polyclonal antibody (Cat # PAB19394) at 5 ug/mL.

- Enzyme-linked Immunoabsorbent Assay

## Gene Info — TMEM204

Entrez GeneID	<a href="#">79652</a>
Protein Accession#	<a href="#">NP_078876</a>
Gene Name	TMEM204
Gene Alias	C16orf30, CLP24, FLJ20898, MGC111564
Gene Description	transmembrane protein 204
Omim ID	<a href="#">611002</a>
Gene Ontology	<a href="#">Hyperlink</a>
Gene Summary	C16ORF30 plays a role in cell adhesion and cellular permeability at adherens junctions (Kearsey et al., 2004 [PubMed 15206924]).[supplied by OMIM]
Other Designations	claudin-like protein 24