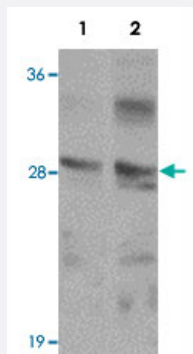


# TMEM192 polyclonal antibody

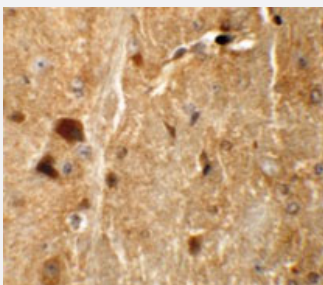
Catalog # PAB19393      Size 100 ug

## Applications



### Western Blot (Cell lysate)

Western blot analysis of TMEM192 in SK-N-SH cell lysate with TMEM192 polyclonal antibody (Cat # PAB19393) at (1) 0.5 and (2) 1 ug/mL.



### Immunohistochemistry

Immunohistochemical staining of mouse brain cells with TMEM192 polyclonal antibody (Cat # PAB19393) at 5 ug/mL.

## Specification

<b>Product Description</b>	Rabbit polyclonal antibody raised against synthetic peptide of TMEM192.
<b>Immunogen</b>	A synthetic peptide corresponding to 17 amino acids near C-terminus of human TMEM192.
<b>Host</b>	Rabbit
<b>Reactivity</b>	Human, Mouse, Rat
<b>Specificity</b>	At least two isoforms of TMEM192 are known to exist; this antibody will recognize both. TMEM192 antibody is predicted to not cross-react with other TMEM proteins.
<b>Form</b>	Liquid

<b>Purification</b>	Peptide affinity purification
<b>Concentration</b>	1 mg/mL
<b>Recommend Usage</b>	Western Blot (0.5-1 ug/mL) Immunohistochemistry (5 ug/mL) The optimal working dilution should be determined by the end user.
<b>Storage Buffer</b>	In PBS (0.02% sodium azide)
<b>Storage Instruction</b>	Store at 4°C for three months. For long term storage store at -20°C. Aliquot to avoid repeated freezing and thawing.
<b>Note</b>	This product contains sodium azide: a POISONOUS AND HAZARDOUS SUBSTANCE which should be handled by trained staff only.

## Applications

- Western Blot (Cell lysate)

Western blot analysis of TMEM192 in SK-N-SH cell lysate with TMEM192 polyclonal antibody (Cat # PAB19393) at (1) 0.5 and (2) 1 ug/mL.

- Immunohistochemistry

Immunohistochemical staining of mouse brain cells with TMEM192 polyclonal antibody (Cat # PAB19393) at 5 ug/mL.

- Enzyme-linked Immunoabsorbent Assay

## Gene Info — TMEM192

<b>Entrez GeneID</b>	<a href="#">201931</a>
<b>Protein Accession#</b>	<a href="#">NP_001093859</a>
<b>Gene Name</b>	TMEM192
<b>Gene Alias</b>	FLJ38482
<b>Gene Description</b>	transmembrane protein 192
<b>Gene Ontology</b>	<a href="#">Hyperlink</a>
<b>Other Designations</b>	-