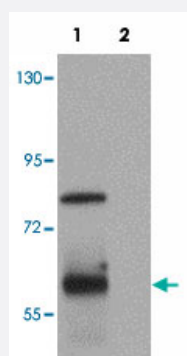


SPTLC1 polyclonal antibody

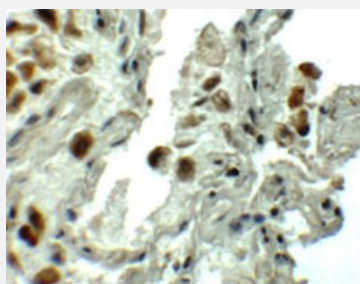
Catalog # PAB19392 Size 100 ug

Applications



Western Blot (Tissue lysate)

Western blot analysis of SPTLC1 in human lung tissue lysate with SPTLC1 polyclonal antibody (Cat # PAB19392) at 1 ug/mL in (1) the absence and (2) the presence of blocking peptide.



Immunohistochemistry

Immunohistochemical staining of human lung cells with SPTLC1 polyclonal antibody (Cat # PAB19392) at 5 ug/mL.

Specification

Product Description	Rabbit polyclonal antibody raised against synthetic peptide of SPTLC1.
Immunogen	A synthetic peptide corresponding to 17 amino acids near C-terminus of human SPTLC1.
Host	Rabbit
Reactivity	Human
Specificity	At least two isoforms of SPTLC1 are known to exist; this antibody will detect only isoform a. This antibody is predicted to not cross-react with SPT2.
Form	Liquid

Purification	Peptide affinity purification
Concentration	1 mg/mL
Recommend Usage	Western Blot (1 ug/mL) Immunohistochemistry (5 ug/mL) The optimal working dilution should be determined by the end user.
Storage Buffer	In PBS (0.02% sodium azide)
Storage Instruction	Store at 4°C for three months. For long term storage store at -20°C. Aliquot to avoid repeated freezing and thawing.
Note	This product contains sodium azide: a POISONOUS AND HAZARDOUS SUBSTANCE which should be handled by trained staff only.

Applications

- Western Blot (Tissue lysate)

Western blot analysis of SPTLC1 in human lung tissue lysate with SPTLC1 polyclonal antibody (Cat # PAB19392) at 1 ug/mL in (1) the absence and (2) the presence of blocking peptide.

- Immunohistochemistry

Immunohistochemical staining of human lung cells with SPTLC1 polyclonal antibody (Cat # PAB19392) at 5 ug/mL.

- Enzyme-linked Immunoabsorbent Assay

Gene Info — SPTLC1

Entrez GeneID	10558
Protein Accession#	NP_6406
Gene Name	SPTLC1
Gene Alias	HSAN, HSAN1, HSN1, LBC1, LCB1, MGC14645, SPT1, SPTI
Gene Description	serine palmitoyltransferase, long chain base subunit 1
Omim ID	162400 605712
Gene Ontology	Hyperlink

Gene Summary

Serine palmitoyltransferase, which consists of two different subunits, is the key enzyme in sphingolipid biosynthesis. It converts L-serine and palmitoyl-CoA to 3-oxosphinganine with pyridoxal 5'-phosphate as a cofactor. The product of this gene is the long chain base subunit 1 of serine palmitoyltransferase. Mutations in this gene were identified in patients with hereditary sensory neuropathy type 1. Alternatively spliced variants encoding different isoforms have been identified. [provided by RefSeq]

Other Designations

OTTHUMP00000022810|OTTHUMP00000022811|long chain base biosynthesis protein 1|serine C-palmitoyltransferase|serine palmitoyltransferase subunit 1|serine-palmitoyl-CoA transferase 1

Pathway

- [Metabolic pathways](#)
- [Sphingolipid metabolism](#)

Disease

- [Cleft Lip](#)
- [Cleft Palate](#)
- [Hereditary Sensory and Autonomic Neuropathies](#)