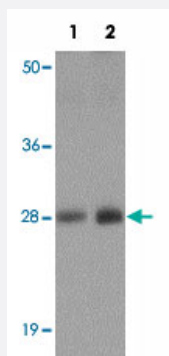


# TM4SF1 polyclonal antibody

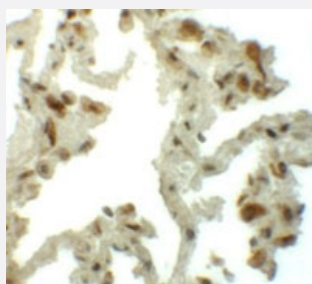
Catalog # PAB19385      Size 100 ug

## Applications



### Western Blot (Tissue lysate)

Western blot analysis of TM4SF1 in human lung tissue lysate with TM4SF1 polyclonal antibody (Cat # PAB19385) at (1) 0.5 and (2) 1 ug/mL.



### Immunohistochemistry

Immunohistochemical staining of human lung cells with TM4SF1 polyclonal antibody (Cat # PAB19385) at 5 ug/mL.

## Specification

<b>Product Description</b>	Rabbit polyclonal antibody raised against synthetic peptide of TM4SF1.
<b>Immunogen</b>	A synthetic peptide corresponding to 18 amino acids near N-terminus of human TM4SF1.
<b>Host</b>	Rabbit
<b>Reactivity</b>	Human, Mouse, Rat
<b>Specificity</b>	At least three isoforms of TM4SF1 are known to exist; this antibody will recognize only the two largest isoforms. TM4SF1 antibody is predicted to not cross-react with other tetraspanin proteins.
<b>Form</b>	Liquid

<b>Purification</b>	Peptide affinity purification
<b>Concentration</b>	1 mg/mL
<b>Recommend Usage</b>	Western Blot (0.5-1 ug/mL) Immunohistochemistry (5 ug/mL) The optimal working dilution should be determined by the end user.
<b>Storage Buffer</b>	In PBS (0.02% sodium azide)
<b>Storage Instruction</b>	Store at 4°C for three months. For long term storage store at -20°C. Aliquot to avoid repeated freezing and thawing.
<b>Note</b>	This product contains sodium azide: a POISONOUS AND HAZARDOUS SUBSTANCE which should be handled by trained staff only.

## Applications

- Western Blot (Tissue lysate)

Western blot analysis of TM4SF1 in human lung tissue lysate with TM4SF1 polyclonal antibody (Cat # PAB19385) at (1) 0.5 and (2) 1 ug/mL.

- Immunohistochemistry

Immunohistochemical staining of human lung cells with TM4SF1 polyclonal antibody (Cat # PAB19385) at 5 ug/mL.

- Enzyme-linked Immunoabsorbent Assay

## Gene Info — TM4SF1

<b>Entrez GeneID</b>	<a href="#">4071</a>
<b>Protein Accession#</b>	<a href="#">NP_055035</a>
<b>Gene Name</b>	TM4SF1
<b>Gene Alias</b>	H-L6, L6, M3S1, TAAL6
<b>Gene Description</b>	transmembrane 4 L six family member 1
<b>Omim ID</b>	<a href="#">191155</a>
<b>Gene Ontology</b>	<a href="#">Hyperlink</a>

**Gene Summary**

The protein encoded by this gene is a member of the transmembrane 4 superfamily, also known as the tetraspanin family. Most of these members are cell-surface proteins that are characterized by the presence of four hydrophobic domains. The proteins mediate signal transduction events that play a role in the regulation of cell development, activation, growth and motility. This encoded protein is a cell surface antigen and is highly expressed in different carcinomas. [provided by RefSeq]

**Other Designations**

membrane component, chromosome 3, surface marker 1|transmembrane 4 superfamily member 1|tumor-associated antigen L6