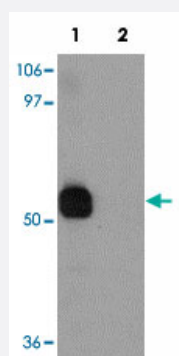


# SPTLC2 polyclonal antibody

Catalog # PAB19384      Size 100 ug

## Applications



### Western Blot (Cell lysate)

Western blot analysis of SPTLC2 in NIH/3T3 cell lysate with SPTLC2 polyclonal antibody (Cat # PAB19384) at 1 ug/mL in (1) the absence and (2) the presence of blocking peptide.



### Immunocytochemistry

Immunocytochemical staining of 3T3 cells with SPTLC2 polyclonal antibody (Cat # PAB19384) at 10 ug/mL.

## Specification

<b>Product Description</b>	Rabbit polyclonal antibody raised against synthetic peptide of SPTLC2.
<b>Immunogen</b>	A synthetic peptide corresponding to 15 amino acids near C-terminus of human SPTLC2.
<b>Host</b>	Rabbit
<b>Reactivity</b>	Human, Mouse, Rat
<b>Specificity</b>	At least three isoforms of SPTLC2 are known to exist; this antibody will not detect isoform b. This antibody is predicted to not cross-react with SPT1.
<b>Form</b>	Liquid

<b>Purification</b>	Peptide affinity purification
<b>Concentration</b>	1 mg/mL
<b>Recommend Usage</b>	Western Blot (1 ug/mL) Immunocytochemistry (10 ug/mL) The optimal working dilution should be determined by the end user.
<b>Storage Buffer</b>	In PBS (0.02% sodium azide)
<b>Storage Instruction</b>	Store at 4°C for three months. For long term storage store at -20°C. Aliquot to avoid repeated freezing and thawing.
<b>Note</b>	This product contains sodium azide: a POISONOUS AND HAZARDOUS SUBSTANCE which should be handled by trained staff only.

## Applications

- Western Blot (Cell lysate)

Western blot analysis of SPTLC2 in NIH/3T3 cell lysate with SPTLC2 polyclonal antibody (Cat # PAB19384) at 1 ug/mL in (1) the absence and (2) the presence of blocking peptide.

- Immunocytochemistry

Immunocytochemical staining of 3T3 cells with SPTLC2 polyclonal antibody (Cat # PAB19384) at 10 ug/mL.

- Enzyme-linked Immunoabsorbent Assay

## Gene Info — SPTLC2

<b>Entrez GeneID</b>	<a href="#">9517</a>
<b>Protein Accession#</b>	<a href="#">NP_4854</a>
<b>Gene Name</b>	SPTLC2
<b>Gene Alias</b>	KIAA0526, LCB2, SPT2
<b>Gene Description</b>	serine palmitoyltransferase, long chain base subunit 2
<b>Omim ID</b>	<a href="#">605713</a>
<b>Gene Ontology</b>	<a href="#">Hyperlink</a>

**Gene Summary**

This gene encodes a long chain base subunit of serine palmitoyltransferase. Serine palmitoyltransferase, which consists of two different subunits, is the key enzyme in sphingolipid biosynthesis. It catalyzes the pyridoxal-5-prime-phosphate-dependent condensation of L-serine and palmitoyl-CoA to 3-oxosphinganine. Mutations in this gene were identified in patients with hereditary sensory neuropathy type I. Alternatively spliced variants encoding different isoforms have been identified. [provided by RefSeq]

**Other Designations**

serine palmitoyltransferase, subunit II

## Pathway

- [Metabolic pathways](#)
- [Sphingolipid metabolism](#)