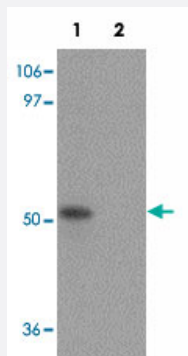


FLJ14213 polyclonal antibody

Catalog # PAB19380 Size 100 ug

Applications



Western Blot (Cell lysate)

Western blot analysis of FLJ14213 in NIH/3T3 cell lysate with FLJ14213 polyclonal antibody (Cat # PAB19380) at 1 ug/mL in (1) the absence and (2) the presence of blocking peptide.



Immunocytochemistry

Immunocytochemical staining of 293 cells with FLJ14213 polyclonal antibody (Cat # PAB19380) at 10 ug/mL.

Specification

Product Description	Rabbit polyclonal antibody raised against synthetic peptide of FLJ14213.
Immunogen	A synthetic peptide corresponding to 17 amino acids near internal region of human FLJ14213.
Host	Rabbit
Reactivity	Human, Mouse
Specificity	At least three isoforms of FLJ14213 are known to exist; this antibody will recognize only isoforms a and b. This antibody will not cross-react with PPR5.
Form	Liquid

Purification	Peptide affinity purification
Concentration	1 mg/mL
Recommend Usage	Western Blot (1 ug/mL) Immunocytochemistry (10 ug/mL) The optimal working dilution should be determined by the end user.
Storage Buffer	In PBS (0.02% sodium azide)
Storage Instruction	Store at 4°C for three months. For long term storage store at -20°C. Aliquot to avoid repeated freezing and thawing.
Note	This product contains sodium azide: a POISONOUS AND HAZARDOUS SUBSTANCE which should be handled by trained staff only.

Applications

- Western Blot (Cell lysate)

Western blot analysis of FLJ14213 in NIH/3T3 cell lysate with FLJ14213 polyclonal antibody (Cat # PAB19380) at 1 ug/mL in (1) the absence and (2) the presence of blocking peptide.

- Immunocytochemistry

Immunocytochemical staining of 293 cells with FLJ14213 polyclonal antibody (Cat # PAB19380) at 10 ug/mL.

- Enzyme-linked Immunoabsorbent Assay

Gene Info — FLJ14213

Entrez GeneID	79899
Protein Accession#	NP_001153639
Gene Name	FLJ14213
Gene Alias	MGC16218, PROTOR2
Gene Description	protor-2
Gene Ontology	Hyperlink
Other Designations	-