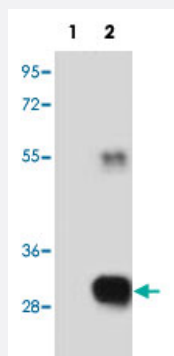


RCE1 polyclonal antibody

Catalog # PAB1938

Size 400 uL

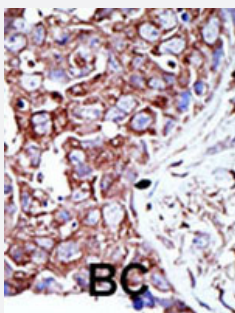
Applications



Western Blot (Transfected lysate)

Western blot analysis of RCE1 (arrow) using RCE1 polyclonal antibody (Cat # PAB1938).

293 cell lysates (2 ug/lane) either nontransfected (Lane 1) or transiently transfected with the RCE1 gene (Lane 2).



Immunohistochemistry (Formalin/PFA-fixed paraffin-embedded sections)

Formalin-fixed and paraffin-embedded human breast cancer tissue reacted with RCE1 polyclonal antibody (Cat # PAB1938), which was peroxidase-conjugated to the secondary antibody, followed by DAB staining. This data demonstrates the use of this antibody for immunohistochemistry; clinical relevance has not been evaluated.

Specification

Product Description	Rabbit polyclonal antibody raised against synthetic peptide of RCE1.
Immunogen	A synthetic peptide (conjugated with KLH) corresponding to N-terminus of human RCE1.
Host	Rabbit
Reactivity	Human
Form	Liquid
Purification	Protein A purification

Recommend Usage	Western Blot (1:1000) Immunohistochemistry (1:50-100) The optimal working dilution should be determined by the end user.
Storage Buffer	In PBS (0.09% sodium azide)
Storage Instruction	Store at 4°C. For long term storage store at -20°C. Aliquot to avoid repeated freezing and thawing.
Note	This product contains sodium azide: a POISONOUS AND HAZARDOUS SUBSTANCE which should be handled by trained staff only.

Applications

- Western Blot (Transfected lysate)

Western blot analysis of RCE1 (arrow) using RCE1 polyclonal antibody (Cat # PAB1938).
293 cell lysates (2 ug/lane) either nontransfected (Lane 1) or transiently transfected with the RCE1 gene (Lane 2).

- Immunohistochemistry (Formalin/PFA-fixed paraffin-embedded sections)

Formalin-fixed and paraffin-embedded human breast cancer tissue reacted with RCE1 polyclonal antibody (Cat # PAB1938), which was peroxidase-conjugated to the secondary antibody, followed by DAB staining. This data demonstrates the use of this antibody for immunohistochemistry; clinical relevance has not been evaluated.

Gene Info — RCE1

Entrez GeneID	9986
Protein Accession#	NP_005124;Q9Y256
Gene Name	RCE1
Gene Alias	FACE2, RCE1A, RCE1B
Gene Description	RCE1 homolog, prenyl protein peptidase (S. cerevisiae)
Omim ID	605385
Gene Ontology	Hyperlink
Gene Summary	This gene encodes an integral membrane protein which is classified as a member of the metalloprotease family. This enzyme is thought to function in the maintenance and processing of CAAX-type prenylated proteins. [provided by RefSeq]
Other Designations	RCE1 homolog, prenyl protein protease farnesylated protein-converting enzyme 2 prenyl protein peptidase RCE1 prenyl protein-specific endoprotease 2

Publication Reference

- [A carboxyl-terminal interaction of lamin B1 is dependent on the CAAX endoprotease Rce1 and carboxymethylation.](#)

Maske CP, Hollinshead MS, Higbee NC, Bergo MO, Young SG, Vaux DJ.

The Journal of Cell Biolog 2003 Sep; 162(7):1223.

- [Human Ras converting enzyme endoproteolytic specificity at the P2' and P3' positions of K-Ras-derived peptides.](#)

Hollander IJ, Frommer E, Aulabaugh A, Mallon R.

Biochimica et Biophysica Acta 2003 Jun; 1649(1):24.

- [Identification and chromosomal location of two human genes encoding enzymes potentially involved in proteolytic maturation of farnesylated proteins.](#)

Freije JM, Blay P, Pendas AM, Cadinanos J, Crespo P, Lopez-Otin C.

Genomics 1999 Jun; 58(3):270.