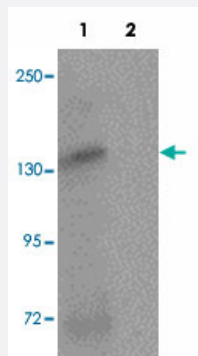


# ATP2C2 polyclonal antibody

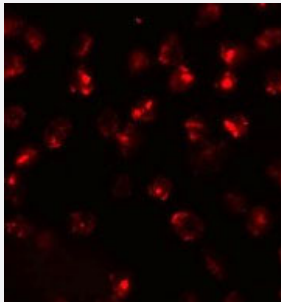
Catalog # PAB19378      Size 100 ug

## Applications



### Western Blot (Cell lysate)

Western blot analysis of ATP2C2 in NIH/3T3 cell lysate with ATP2C2 polyclonal antibody (Cat # PAB19378) at 1 ug/mL in (1) the absence and (2) the presence of blocking peptide.



### Immunofluorescence

Immunofluorescent staining of 3T3 cells with ATP2C2 polyclonal antibody (Cat # PAB19378) at 20 ug/mL.

## Specification

<b>Product Description</b>	Rabbit polyclonal antibody raised against synthetic peptide of ATP2C2.
<b>Immunogen</b>	A synthetic peptide corresponding to 19 amino acids near N-terminus of human ATP2C2.
<b>Host</b>	Rabbit
<b>Reactivity</b>	Human, Mouse
<b>Specificity</b>	At least three isoforms of ATP2C2 are known to exist. ATP2C2 antibody will not cross-react with ATP2C1.
<b>Form</b>	Liquid

<b>Purification</b>	Peptide affinity purification
<b>Concentration</b>	1 mg/mL
<b>Recommend Usage</b>	Western Blot (1 ug/mL) Immunofluorescence (20 ug/mL) The optimal working dilution should be determined by the end user.
<b>Storage Buffer</b>	In PBS (0.02% sodium azide)
<b>Storage Instruction</b>	Store at 4°C for three months. For long term storage store at -20°C. Aliquot to avoid repeated freezing and thawing.
<b>Note</b>	This product contains sodium azide: a POISONOUS AND HAZARDOUS SUBSTANCE which should be handled by trained staff only.

## Applications

- Western Blot (Cell lysate)

Western blot analysis of ATP2C2 in NIH/3T3 cell lysate with ATP2C2 polyclonal antibody (Cat # PAB19378) at 1 ug/mL in (1) the absence and (2) the presence of blocking peptide.

- Immunofluorescence

Immunofluorescent staining of 3T3 cells with ATP2C2 polyclonal antibody (Cat # PAB19378) at 20 ug/mL.

- Enzyme-linked Immunoabsorbent Assay

## Gene Info — ATP2C2

<b>Entrez GeneID</b>	<a href="#">9914</a>
<b>Protein Accession#</b>	<a href="#">NP_055676</a>
<b>Gene Name</b>	ATP2C2
<b>Gene Alias</b>	DKFZp686H22230, KIAA0703, SPCA2
<b>Gene Description</b>	ATPase, Ca++ transporting, type 2C, member 2
<b>Gene Ontology</b>	<a href="#">Hyperlink</a>
<b>Gene Summary</b>	ATPase

**Other Designations**

calcium-transporting ATPase|calcium-transporting ATPase 2C2|secretory pathway calcium ATPase 2

---

**Disease**

- [Migraine without Aura](#)
- [Tobacco Use Disorder](#)