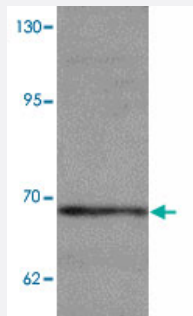


WIZ polyclonal antibody

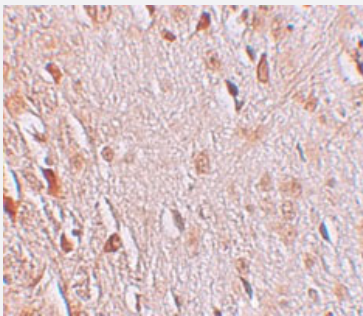
Catalog # PAB19374 Size 100 ug

Applications



Western Blot (Tissue lysate)

Western blot analysis of WIZ in rat lung tissue lysate with WIZ polyclonal antibody (Cat # PAB19374) at 1 ug/mL.



Immunohistochemistry

Immunohistochemical staining of human brain cells with WIZ polyclonal antibody (Cat # PAB19374) at 2.5 ug/mL.

Specification

Product Description	Rabbit polyclonal antibody raised against synthetic peptide of WIZ.
Immunogen	A synthetic peptide corresponding to 17 amino acids near C-terminus of human WIZ.
Host	Rabbit
Reactivity	Human, Mouse, Rat
Specificity	At least four isoforms of WIZ are known to exist; this antibody will detect all four.
Form	Liquid
Purification	Peptide affinity purification

Concentration	1 mg/mL
Recommend Usage	Western Blot (1 ug/mL) Immunohistochemistry (2.5 ug/mL) The optimal working dilution should be determined by the end user.
Storage Buffer	In PBS (0.02% sodium azide)
Storage Instruction	Store at 4°C for three months. For long term storage store at -20°C. Aliquot to avoid repeated freezing and thawing.
Note	This product contains sodium azide: a POISONOUS AND HAZARDOUS SUBSTANCE which should be handled by trained staff only.

Applications

- Western Blot (Tissue lysate)

Western blot analysis of WIZ in rat lung tissue lysate with WIZ polyclonal antibody (Cat # PAB19374) at 1 ug/mL.

- Immunohistochemistry

Immunohistochemical staining of human brain cells with WIZ polyclonal antibody (Cat # PAB19374) at 2.5 ug/mL.

- Enzyme-linked Immunoabsorbent Assay

Gene Info — WIZ

Entrez GeneID	58525
Protein Accession#	AA44333
Gene Name	WIZ
Gene Alias	ZNF803
Gene Description	widely interspaced zinc finger motifs
Gene Ontology	Hyperlink
Other Designations	WIZ zinc finger widely-interspaced zinc finger motifs