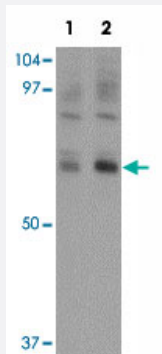


NUMB polyclonal antibody

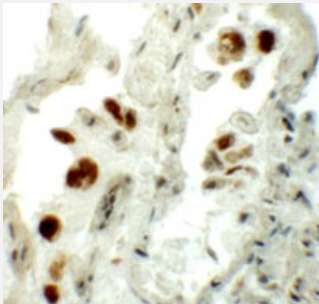
Catalog # PAB19370 Size 100 ug

Applications



Western Blot (Tissue lysate)

Western blot analysis of NUMB in mouse lung tissue lysate with NUMB polyclonal antibody (Cat # PAB19370) at (1) 0.25 and (2) 0.5 ug/mL.



Immunohistochemistry

Immunohistochemical staining of human lung cells with NUMB polyclonal antibody (Cat # PAB19370) at 5 ug/mL.

Specification

Product Description	Rabbit polyclonal antibody raised against synthetic peptide of NUMB.
Immunogen	A synthetic peptide corresponding to 17 amino acids near C-terminus of human NUMB.
Host	Rabbit
Reactivity	Human, Mouse, Rat
Specificity	At least four isoforms of NUMB are known to exist; this antibody will detect all of them.
Form	Liquid

Purification	Peptide affinity purification
Concentration	1 mg/mL
Recommend Usage	Western Blot (0.25-0.5 ug/mL) Immunohistochemistry (5 ug/mL) The optimal working dilution should be determined by the end user.
Storage Buffer	In PBS (0.02% sodium azide)
Storage Instruction	Store at 4°C for three months. For long term storage store at -20°C. Aliquot to avoid repeated freezing and thawing.
Note	This product contains sodium azide: a POISONOUS AND HAZARDOUS SUBSTANCE which should be handled by trained staff only.

Applications

- Western Blot (Tissue lysate)

Western blot analysis of NUMB in mouse lung tissue lysate with NUMB polyclonal antibody (Cat # PAB19370) at (1) 0.25 and (2) 0.5 ug/mL.

- Immunohistochemistry

Immunohistochemical staining of human lung cells with NUMB polyclonal antibody (Cat # PAB19370) at 5 ug/mL.

- Enzyme-linked Immunoabsorbent Assay

Gene Info — NUMB

Entrez GeneID	8650
Protein Accession#	NP_1005743
Gene Name	NUMB
Gene Alias	S171
Gene Description	numb homolog (Drosophila)
Omim ID	603728
Gene Ontology	Hyperlink

Gene Summary

The protein encoded by this gene plays a role in the determination of cell fates during development. The encoded protein, whose degradation is induced in a proteasome-dependent manner by MDM2, is a membrane-bound protein that has been shown to associate with EPS15, LNX1, and NOTCH1. Four transcript variants encoding different isoforms have been found for this gene. [provided by RefSeq]

Other Designations

numb homolog

Pathway

- [Notch signaling pathway](#)

Disease

- [Atherosclerosis](#)
- [Calcinosis](#)
- [Disease Susceptibility](#)