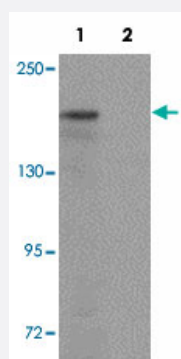


ATP2C1 polyclonal antibody

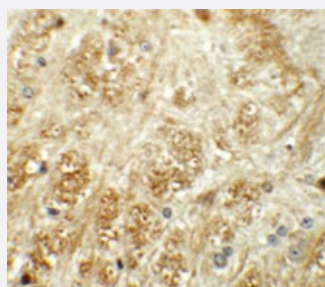
Catalog # PAB19368 Size 100 ug

Applications



Western Blot (Tissue lysate)

Western blot analysis of ATP2C1 in mouse brain tissue lysate with ATP2C1 polyclonal antibody (Cat # PAB19368) at 1 ug/mL in (1) the absence and (2) the presence of blocking peptide.



Immunohistochemistry

Immunohistochemical staining of mouse brain cells with ATP2C1 polyclonal antibody (Cat # PAB19368) at 5 ug/mL.

Specification

Product Description	Rabbit polyclonal antibody raised against synthetic peptide of ATP2C1.
Immunogen	A synthetic peptide corresponding to 19 amino acids near C-terminus of human ATP2C1.
Host	Rabbit
Reactivity	Human, Mouse
Specificity	At least four isoforms of ATP2C1 are known to exist; this antibody will recognize only the three longest isoforms. ATP2C1 antibody will not cross-react with ATP2C2.
Form	Liquid

Purification	Peptide affinity purification
Concentration	1 mg/mL
Recommend Usage	Western Blot (1 ug/mL) Immunohistochemistry (5 ug/mL) The optimal working dilution should be determined by the end user.
Storage Buffer	In PBS (0.02% sodium azide)
Storage Instruction	Store at 4°C for three months. For long term storage store at -20°C. Aliquot to avoid repeated freezing and thawing.
Note	This product contains sodium azide: a POISONOUS AND HAZARDOUS SUBSTANCE which should be handled by trained staff only.

Applications

- Western Blot (Tissue lysate)

Western blot analysis of ATP2C1 in mouse brain tissue lysate with ATP2C1 polyclonal antibody (Cat # PAB19368) at 1 ug/mL in (1) the absence and (2) the presence of blocking peptide.

- Immunohistochemistry

Immunohistochemical staining of mouse brain cells with ATP2C1 polyclonal antibody (Cat # PAB19368) at 5 ug/mL.

- Enzyme-linked Immunoabsorbent Assay

Gene Info — ATP2C1

Entrez GeneID	27032
Protein Accession#	NP_001001486
Gene Name	ATP2C1
Gene Alias	ATP2C1A, BCPM, HHD, KIAA1347, PMR1, SPCA1, hSPCA1
Gene Description	ATPase, Ca++ transporting, type 2C, member 1
Omim ID	169600 604384
Gene Ontology	Hyperlink

Gene Summary

The protein encoded by this gene belongs to the family of P-type cation transport ATPases. This magnesium-dependent enzyme catalyzes the hydrolysis of ATP coupled with the transport of the calcium. Defects in this gene cause Hailey-Hailey disease, an autosomal dominant disorder. Alternatively spliced transcript variants encoding different isoforms have been identified. [provided by RefSeq]

Other Designations

ATP-dependent Ca(2+) pump|ATPase 2C1|ATPase, Ca(2+)-sequestering|HUSSY-28|calcium-transporting ATPase 2C1|secretory pathway Ca2+/Mn2+ ATPase