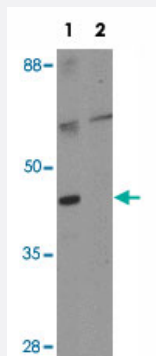


GEMC1 polyclonal antibody

Catalog # PAB19365 Size 100 ug

Applications



Western Blot (Tissue lysate)

Western blot analysis of GEMC1 in mouse heart tissue lysate with GEMC1 polyclonal antibody (Cat # PAB19365) at 1 ug/mL in (1) the absence and (2) the presence of blocking peptide.

Specification

Product Description	Rabbit polyclonal antibody raised against synthetic peptide of GEMC1.
Immunogen	A synthetic peptide corresponding to 19 amino acids near the center region of human GEMC1.
Host	Rabbit
Reactivity	Human, Mouse
Form	Liquid
Purification	Affinity purification
Recommend Usage	Western blot (1-2 ug/mL) The optimal working dilution should be determined by the end user.
Storage Buffer	In PBS (0.02% sodium azide)
Storage Instruction	Store at 4°C for three months. For long term storage store at -20°C. Aliquot to avoid repeated freezing and thawing.
Note	This product contains sodium azide: a POISONOUS AND HAZARDOUS SUBSTANCE which should be handled by trained staff only.

Applications

- Western Blot (Tissue lysate)

Western blot analysis of GEMC1 in mouse heart tissue lysate with GEMC1 polyclonal antibody (Cat # PAB19365) at 1 ug/mL in (1) the absence and (2) the presence of blocking peptide.

- Enzyme-linked Immunoabsorbent Assay

Gene Info — LOC647309

Entrez GeneID	647309
---------------	------------------------

Gene Name	LOC647309
-----------	-----------

Gene Alias	-
------------	---

Gene Description	Uncharacterized protein ENSP00000371466
------------------	---

Gene Ontology	Hyperlink
---------------	---------------------------

Other Designations	-
--------------------	---