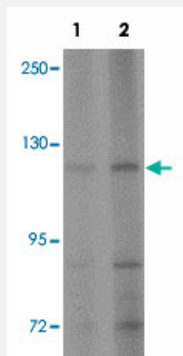


# AP3B2 polyclonal antibody

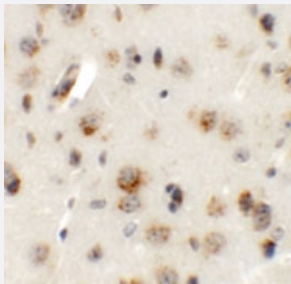
Catalog # PAB19359      Size 100 ug

## Applications



### Western Blot (Tissue lysate)

Western blot analysis of AP3B2 in rat brain tissue lysate with AP3B2 polyclonal antibody (Cat # PAB19359) at (1) 1 and (2) 2 ug/mL.



### Immunohistochemistry

Immunohistochemical staining of mouse brain cells with AP3B2 polyclonal antibody (Cat # PAB19359) at 5 ug/mL.

## Specification

<b>Product Description</b>	Rabbit polyclonal antibody raised against synthetic peptide of AP3B2.
<b>Immunogen</b>	A synthetic peptide corresponding to 18 amino acids near N-terminus of human AP3B2.
<b>Host</b>	Rabbit
<b>Reactivity</b>	Human, Mouse, Rat
<b>Form</b>	Liquid
<b>Purification</b>	Peptide affinity purification

Concentration	1 mg/mL
Recommend Usage	Western Blot (1-2 ug/mL) Immunohistochemistry (5 ug/mL) The optimal working dilution should be determined by the end user.
Storage Buffer	In PBS (0.02% sodium azide)
Storage Instruction	Store at 4°C for three months. For long term storage store at -20°C. Aliquot to avoid repeated freezing and thawing.
Note	This product contains sodium azide: a POISONOUS AND HAZARDOUS SUBSTANCE which should be handled by trained staff only.

## Applications

- Western Blot (Tissue lysate)

Western blot analysis of AP3B2 in rat brain tissue lysate with AP3B2 polyclonal antibody (Cat # PAB19359) at (1) 1 and (2) 2 ug/mL.

- Immunohistochemistry

Immunohistochemical staining of mouse brain cells with AP3B2 polyclonal antibody (Cat # PAB19359) at 5 ug/mL.

- Enzyme-linked Immunoabsorbent Assay

## Gene Info — AP3B2

Entrez GeneID	<a href="#">8120</a>
Gene Name	AP3B2
Gene Alias	DKFZp686D17136, NAPT B
Gene Description	adaptor-related protein complex 3, beta 2 subunit
Omim ID	<a href="#">602166</a>
Gene Ontology	<a href="#">Hyperlink</a>
Gene Summary	Adaptor protein-3 (AP3) is a heterotetrameric vesicle-coat protein complex. Some AP3 subunits are ubiquitously expressed, whereas others are expressed exclusively in neurons. The neuron-specific AP3 complex, which includes AP3B2, is thought to serve neuron-specific functions such as neurotransmitter release (Grabner et al., 2006 [PubMed 16788073]).[supplied by OMIM]
Other Designations	Neuronal adaptin-like protein, beta-subunit

## Pathway

- [Lysosome](#)

## Disease

- [Genetic Predisposition to Disease](#)
- [Schizophrenia](#)