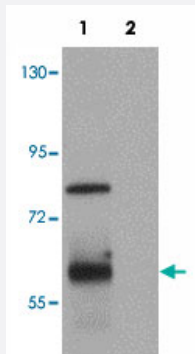


KAL1 polyclonal antibody

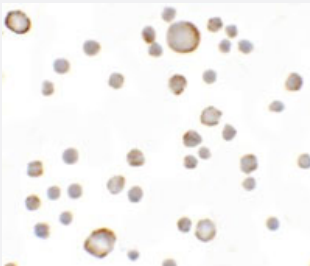
Catalog # PAB19357 Size 100 ug

Applications



Western Blot (Cell lysate)

Western blot analysis of KAL1 in MCF-7 cell lysate with KAL1 polyclonal antibody (Cat # PAB19357) at 1 ug/mL.



Immunocytochemistry

Immunocytochemical staining of MCF-7 cells with KAL1 polyclonal antibody (Cat # PAB19357) at 5 ug/mL.

Specification

Product Description	Rabbit polyclonal antibody raised against synthetic peptide of KAL1.
Immunogen	A synthetic peptide corresponding to 18 amino acids near internal region of human KAL1.
Host	Rabbit
Reactivity	Human
Form	Liquid
Purification	Peptide affinity purification

Concentration	1 mg/mL
Recommend Usage	Western Blot (1 ug/mL) Immunocytochemistry (5 ug/mL) The optimal working dilution should be determined by the end user.
Storage Buffer	In PBS (0.02% sodium azide)
Storage Instruction	Store at 4°C for three months. For long term storage store at -20°C. Aliquot to avoid repeated freezing and thawing.
Note	This product contains sodium azide: a POISONOUS AND HAZARDOUS SUBSTANCE which should be handled by trained staff only.

Applications

- Western Blot (Cell lysate)

Western blot analysis of KAL1 in MCF-7 cell lysate with KAL1 polyclonal antibody (Cat # PAB19357) at 1 ug/mL.

- Immunocytochemistry

Immunocytochemical staining of MCF-7 cells with KAL1 polyclonal antibody (Cat # PAB19357) at 5 ug/mL.

- Enzyme-linked Immunoabsorbent Assay

Gene Info — KAL1

Entrez GeneID	3730
Protein Accession#	NP_000207
Gene Name	KAL1
Gene Alias	ADMLX, HHA, KAL, KALIG-1, KMS
Gene Description	Kallmann syndrome 1 sequence
Omim ID	308700
Gene Ontology	Hyperlink
Gene Summary	Mutations in this gene cause the X-linked Kallmann syndrome. The encoded protein is similar in sequence to proteins known to function in neural cell adhesion and axonal migration. In addition, this cell surface protein is N-glycosylated and may have anti-protease activity. [provided by RefSeq]

Other Designations

Kallmann syndrome 1 protein|Kallmann syndrome interval gene 1|Kallmann syndrome-1 sequence (anosmin-1)|OTTHUMP00000022873|adhesion molecule-like X-linked|anosmin-1

Disease

- [Amenorrhea](#)
- [Genetic Predisposition to Disease](#)
- [Hypogonadism](#)
- [Kallmann Syndrome](#)
- [Obesity](#)
- [Ovarian Failure](#)
- [Polycystic Ovary Syndrome](#)
- [Puberty](#)
- [Thrombophilia](#)
- [Tobacco Use Disorder](#)