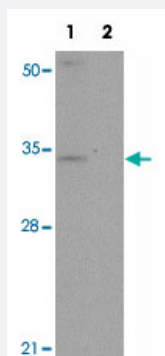


SLC39A3 polyclonal antibody

Catalog # PAB19348

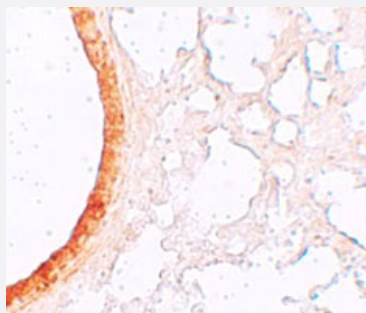
Size 100 ug

Applications



Western Blot (Tissue lysate)

Western blot analysis of SLC39A3 in mouse lung tissue lysate with SLC39A3 polyclonal antibody (Cat # PAB19348) at 1 ug/mL in (1) the absence and (2) the presence of blocking peptide.



Immunohistochemistry

Immunohistochemical staining of mouse lung cells with SLC39A3 polyclonal antibody (Cat # PAB19348) at 5 ug/mL.

Specification

Product Description	Rabbit polyclonal antibody raised against synthetic peptide of SLC39A3.
Immunogen	A synthetic peptide corresponding to 16 amino acids near internal region of human SLC39A3.
Host	Rabbit
Reactivity	Human, Mouse
Form	Liquid
Purification	Peptide affinity purification

Concentration	1 mg/mL
Recommend Usage	Western Blot (1 ug/mL) Immunohistochemistry (5 ug/mL) The optimal working dilution should be determined by the end user.
Storage Buffer	In PBS (0.02% sodium azide)
Storage Instruction	Store at 4°C for three months. For long term storage store at -20°C. Aliquot to avoid repeated freezing and thawing.
Note	This product contains sodium azide: a POISONOUS AND HAZARDOUS SUBSTANCE which should be handled by trained staff only.

Applications

- Western Blot (Tissue lysate)

Western blot analysis of SLC39A3 in mouse lung tissue lysate with SLC39A3 polyclonal antibody (Cat # PAB19348) at 1 ug/mL in (1) the absence and (2) the presence of blocking peptide.

- Immunohistochemistry

Immunohistochemical staining of mouse lung cells with SLC39A3 polyclonal antibody (Cat # PAB19348) at 5 ug/mL.

- Enzyme-linked Immunoabsorbent Assay

Gene Info — SLC39A3

Entrez GeneID	29985
Protein Accession#	NP_653165
Gene Name	SLC39A3
Gene Alias	ZIP3
Gene Description	solute carrier family 39 (zinc transporter), member 3
Gene Ontology	Hyperlink
Gene Summary	O
Other Designations	zinc transporter

Disease

- [Bipolar Disorder](#)