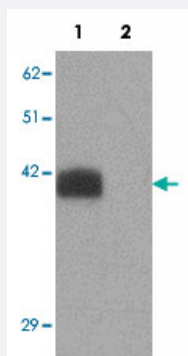


SLC39A2 polyclonal antibody

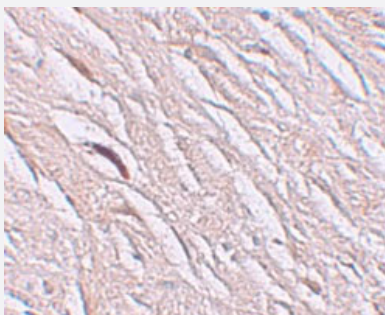
Catalog # PAB19347 Size 100 ug

Applications



Western Blot (Tissue lysate)

Western blot analysis of SLC39A2 in rat brain tissue lysate with SLC39A2 polyclonal antibody (Cat # PAB19347) at 1 ug/mL in (1) the absence and (2) the presence of blocking peptide.



Immunohistochemistry

Immunohistochemical staining of human brain cells with SLC39A2 polyclonal antibody (Cat # PAB19347) at 2.5 ug/mL.

Specification

Product Description	Rabbit polyclonal antibody raised against synthetic peptide of SLC39A2.
Immunogen	A synthetic peptide corresponding to 17 amino acids near N-terminus of human SLC39A2.
Host	Rabbit
Reactivity	Human, Mouse, Rat
Form	Liquid
Purification	Peptide affinity purification

Concentration	1 mg/mL
Recommend Usage	Western Blot (1 ug/mL) Immunohistochemistry (2.5 ug/mL) The optimal working dilution should be determined by the end user.
Storage Buffer	In PBS (0.02% sodium azide)
Storage Instruction	Store at 4°C for three months. For long term storage store at -20°C. Aliquot to avoid repeated freezing and thawing.
Note	This product contains sodium azide: a POISONOUS AND HAZARDOUS SUBSTANCE which should be handled by trained staff only.

Applications

- Western Blot (Tissue lysate)

Western blot analysis of SLC39A2 in rat brain tissue lysate with SLC39A2 polyclonal antibody (Cat # PAB19347) at 1 ug/mL in (1) the absence and (2) the presence of blocking peptide.

- Immunohistochemistry

Immunohistochemical staining of human brain cells with SLC39A2 polyclonal antibody (Cat # PAB19347) at 2.5 ug/mL.

- Enzyme-linked Immunoabsorbent Assay

Gene Info — SLC39A2

Entrez GeneID	29986
Protein Accession#	NP_055394
Gene Name	SLC39A2
Gene Alias	MGC119190, ZIP2
Gene Description	solute carrier family 39 (zinc transporter), member 2
Gene Ontology	Hyperlink
Gene Summary	O
Other Designations	OTTHUMP00000164402

Disease

- [Carotid Artery Diseases](#)
- [Genetic Predisposition to Disease](#)
- [Lung Neoplasms](#)
- [Pulmonary Disease](#)
- [Urinary Bladder Neoplasms](#)
- [Werner syndrome](#)