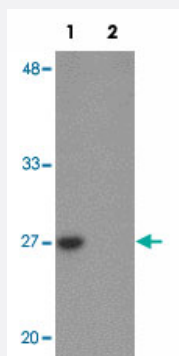


TMEM59 polyclonal antibody

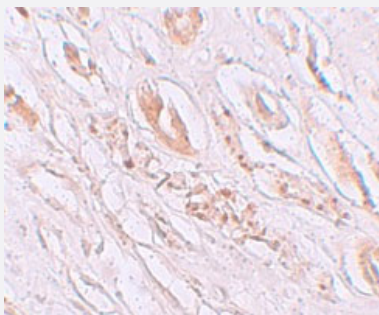
Catalog # PAB19345 Size 100 ug

Applications



Western Blot (Tissue lysate)

Western blot analysis of TMEM59 in human kidney tissue lysate with TMEM59 polyclonal antibody (Cat # PAB19345) at 1 ug/mL in (1) the absence and (2) the presence of blocking peptide.



Immunohistochemistry

Immunohistochemical staining of human kidney cells with TMEM59 polyclonal antibody (Cat # PAB19345) at 2.5 ug/mL.

Specification

Product Description	Rabbit polyclonal antibody raised against synthetic peptide of TMEM59.
Immunogen	A synthetic peptide corresponding to 16 amino acids near N-terminus of human TMEM59.
Host	Rabbit
Reactivity	Human
Form	Liquid
Purification	Peptide affinity purification

Concentration	1 mg/mL
Recommend Usage	Western Blot (1 ug/mL) Immunohistochemistry (2.5 ug/mL) The optimal working dilution should be determined by the end user.
Storage Buffer	In PBS (0.02% sodium azide)
Storage Instruction	Store at 4°C for three months. For long term storage store at -20°C. Aliquot to avoid repeated freezing and thawing.
Note	This product contains sodium azide: a POISONOUS AND HAZARDOUS SUBSTANCE which should be handled by trained staff only.

Applications

- Western Blot (Tissue lysate)

Western blot analysis of TMEM59 in human kidney tissue lysate with TMEM59 polyclonal antibody (Cat # PAB19345) at 1 ug/mL in (1) the absence and (2) the presence of blocking peptide.

- Immunohistochemistry

Immunohistochemical staining of human kidney cells with TMEM59 polyclonal antibody (Cat # PAB19345) at 2.5 ug/mL.

- Enzyme-linked Immunoabsorbent Assay

Gene Info — TMEM59

Entrez GeneID	9528
Protein Accession#	NP_004863
Gene Name	TMEM59
Gene Alias	C1orf8, FLJ42977, HSPC001
Gene Description	transmembrane protein 59
Gene Ontology	Hyperlink
Other Designations	OTTHUMP00000010111 liver membrane-bound protein thymic dendritic cell-derived factor 1

Disease

- [Tobacco Use Disorder](#)