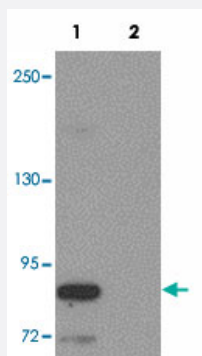


STOX2 polyclonal antibody

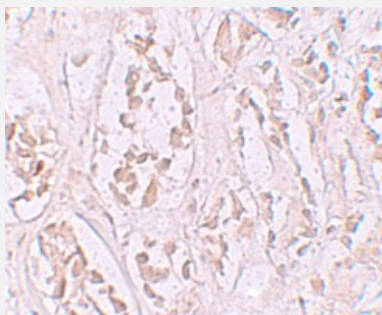
Catalog # PAB19344 Size 100 ug

Applications



Western Blot (Tissue lysate)

Western blot analysis of STOX2 in human kidney tissue lysate with STOX2 polyclonal antibody (Cat # PAB19344) at 1 ug/mL in (1) the absence and (2) the presence of blocking peptide.



Immunohistochemistry

Immunohistochemical staining of human kidney cells with STOX2 polyclonal antibody (Cat # PAB19344) at 2.5 ug/mL.

Specification

Product Description	Rabbit polyclonal antibody raised against synthetic peptide of STOX2.
Immunogen	A synthetic peptide corresponding to 19 amino acids near C-terminus of human STOX2.
Host	Rabbit
Reactivity	Human, Mouse, Rat
Form	Liquid
Purification	Peptide affinity purification

Concentration	1 mg/mL
Recommend Usage	Western Blot (1 ug/mL) Immunohistochemistry (2.5 ug/mL) The optimal working dilution should be determined by the end user.
Storage Buffer	In PBS (0.02% sodium azide)
Storage Instruction	Store at 4°C for three months. For long term storage store at -20°C. Aliquot to avoid repeated freezing and thawing.
Note	This product contains sodium azide: a POISONOUS AND HAZARDOUS SUBSTANCE which should be handled by trained staff only.

Applications

- Western Blot (Tissue lysate)

Western blot analysis of STOX2 in human kidney tissue lysate with STOX2 polyclonal antibody (Cat # PAB19344) at 1 ug/mL in (1) the absence and (2) the presence of blocking peptide.

- Immunohistochemistry

Immunohistochemical staining of human kidney cells with STOX2 polyclonal antibody (Cat # PAB19344) at 2.5 ug/mL.

- Enzyme-linked Immunoabsorbent Assay

Gene Info — STOX2

Entrez GeneID	56977
Protein Accession#	NP_064610
Gene Name	STOX2
Gene Alias	DKFZp762K222
Gene Description	storkhead box 2
Gene Ontology	Hyperlink
Other Designations	-

Disease

- [Tobacco Use Disorder](#)