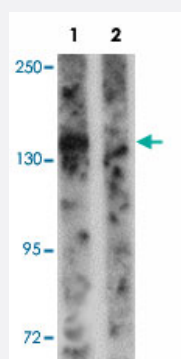


PEAR1 polyclonal antibody

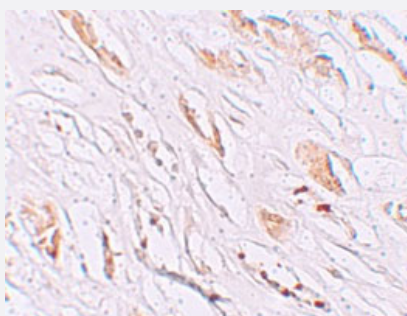
Catalog # PAB19342 Size 100 ug

Applications



Western Blot (Tissue lysate)

Western blot analysis of PEAR1 in rat kidney tissue lysate with PEAR1 polyclonal antibody (Cat # PAB19342) at 1 ug/mL in (1) the absence and (2) the presence of blocking peptide.



Immunohistochemistry

Immunohistochemical staining of human kidney cells with PEAR1 polyclonal antibody (Cat # PAB19342) at 2.5 ug/mL.

Specification

Product Description	Rabbit polyclonal antibody raised against synthetic peptide of PEAR1.
Immunogen	A synthetic peptide corresponding to 16 amino acids near C-terminus of human PEAR1.
Host	Rabbit
Reactivity	Human, Mouse, Rat
Form	Liquid
Purification	Peptide affinity purification

Concentration	1 mg/mL
Recommend Usage	Western Blot (1 ug/mL) Immunohistochemistry (2.5 ug/mL) The optimal working dilution should be determined by the end user.
Storage Buffer	In PBS (0.02% sodium azide)
Storage Instruction	Store at 4°C for three months. For long term storage store at -20°C. Aliquot to avoid repeated freezing and thawing.
Note	This product contains sodium azide: a POISONOUS AND HAZARDOUS SUBSTANCE which should be handled by trained staff only.

Applications

- Western Blot (Tissue lysate)

Western blot analysis of PEAR1 in rat kidney tissue lysate with PEAR1 polyclonal antibody (Cat # PAB19342) at 1 ug/mL in (1) the absence and (2) the presence of blocking peptide.

- Immunohistochemistry

Immunohistochemical staining of human kidney cells with PEAR1 polyclonal antibody (Cat # PAB19342) at 2.5 ug/mL.

- Enzyme-linked Immunoabsorbent Assay

Gene Info — PEAR1

Entrez GeneID	375033
Protein Accession#	NP_001073940
Gene Name	PEAR1
Gene Alias	FLJ00193, JEDI, MEGF12
Gene Description	platelet endothelial aggregation receptor 1
Omim ID	610278
Gene Ontology	Hyperlink
Gene Summary	PEAR1 is a platelet receptor that signals upon the formation of platelet-platelet contacts independent of platelet activation and secondary to platelet aggregation (Nanda et al., 2005 [PubMed 15851471]).[supplied by OMIM]

Other Designations

OTTHUMP00000038718|multiple EGF-like-domains 12

Disease

- [Coronary Artery Disease](#)
- [Genetic Predisposition to Disease](#)