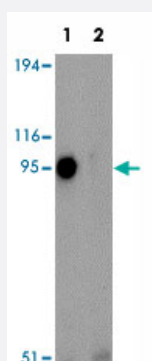


SYNPO2L polyclonal antibody

Catalog # PAB19341

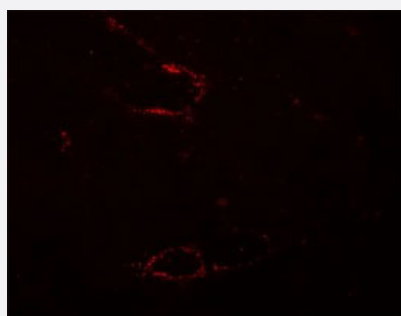
Size 100 ug

Applications



Western Blot (Tissue lysate)

Western blot analysis of SYNPO2L in human thymus tissue lysate with SYNPO2L polyclonal antibody (Cat # PAB19341) at 1 ug/mL in (1) the absence and (2) the presence of blocking peptide.



Immunofluorescence

Immunofluorescent staining of mouse skeletal muscle cells with SYNPO2L polyclonal antibody (Cat # PAB19341) at 5 ug/mL.

Specification

Product Description

Rabbit polyclonal antibody raised against synthetic peptide of SYNPO2L.

Immunogen

A synthetic peptide corresponding to 19 amino acids near N-terminus of human SYNPO2L.

Host

Rabbit

Reactivity

Human, Mouse

Form

Liquid

Purification

Peptide affinity purification

Concentration	1 mg/mL
Recommend Usage	Western Blot (1 ug/mL) Immunohistochemistry (5 ug/mL) The optimal working dilution should be determined by the end user.
Storage Buffer	In PBS (0.02% sodium azide)
Storage Instruction	Store at 4°C for three months. For long term storage store at -20°C. Aliquot to avoid repeated freezing and thawing.
Note	This product contains sodium azide: a POISONOUS AND HAZARDOUS SUBSTANCE which should be handled by trained staff only.

Applications

- Western Blot (Tissue lysate)

Western blot analysis of SYNPO2L in human thymus tissue lysate with SYNPO2L polyclonal antibody (Cat # PAB19341) at 1 ug/mL in (1) the absence and (2) the presence of blocking peptide.

- Immunofluorescence

Immunofluorescent staining of mouse skeletal muscle cells with SYNPO2L polyclonal antibody (Cat # PAB19341) at 5 ug/mL.

- Enzyme-linked Immunoabsorbent Assay

Gene Info — SYNPO2L

Entrez GeneID	79933
Protein Accession#	BAD37139
Gene Name	SYNPO2L
Gene Alias	FLJ12921
Gene Description	synaptopodin 2-like
Gene Ontology	Hyperlink
Other Designations	OTTHUMP00000019821

Disease

- [Alzheimer Disease](#)
- [Genetic Predisposition to Disease](#)