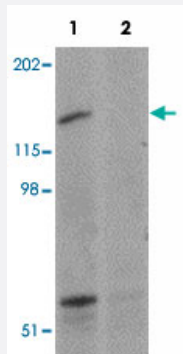


SYNPO2 polyclonal antibody

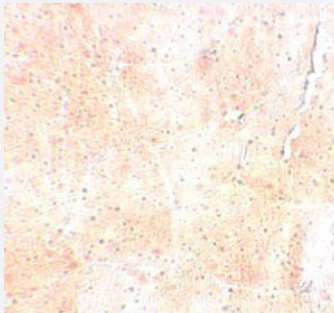
Catalog # PAB19340 Size 100 ug

Applications



Western Blot (Tissue lysate)

Western blot analysis of SYNPO2 in human skeletal muscle tissue lysate with SYNPO2 polyclonal antibody (Cat # PAB19340) at 1 ug/mL in (1) the absence and (2) the presence of blocking peptide.



Immunohistochemistry

Immunohistochemical staining of mouse skeletal muscle cells with SYNPO2 polyclonal antibody (Cat # PAB19340) at 5 ug/mL.

Specification

Product Description	Rabbit polyclonal antibody raised against synthetic peptide of SYNPO2.
Immunogen	A synthetic peptide corresponding to 20 amino acids near N-terminus of human SYNPO2.
Host	Rabbit
Reactivity	Human, Mouse
Form	Liquid
Purification	Peptide affinity purification

Concentration	1 mg/mL
Recommend Usage	Western Blot (1 ug/mL) Immunohistochemistry (5 ug/mL) The optimal working dilution should be determined by the end user.
Storage Buffer	In PBS (0.02% sodium azide)
Storage Instruction	Store at 4°C for three months. For long term storage store at -20°C. Aliquot to avoid repeated freezing and thawing.
Note	This product contains sodium azide: a POISONOUS AND HAZARDOUS SUBSTANCE which should be handled by trained staff only.

Applications

- Western Blot (Tissue lysate)

Western blot analysis of SYNPO2 in human skeletal muscle tissue lysate with SYNPO2 polyclonal antibody (Cat # PAB19340) at 1 ug/mL in (1) the absence and (2) the presence of blocking peptide.

- Immunohistochemistry

Immunohistochemical staining of mouse skeletal muscle cells with SYNPO2 polyclonal antibody (Cat # PAB19340) at 5 ug/mL.

- Enzyme-linked Immunoabsorbent Assay

Gene Info — SYNPO2

Entrez GeneID	171024
Protein Accession#	NP_597734
Gene Name	SYNPO2
Gene Alias	DKFZp686G051
Gene Description	synaptopodin 2
Gene Ontology	Hyperlink
Other Designations	genethonin 2 myopodin

Disease

- [Alcoholism](#)
- [Genetic Predisposition to Disease](#)