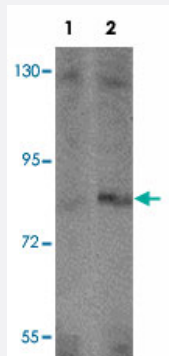


APBA2 polyclonal antibody

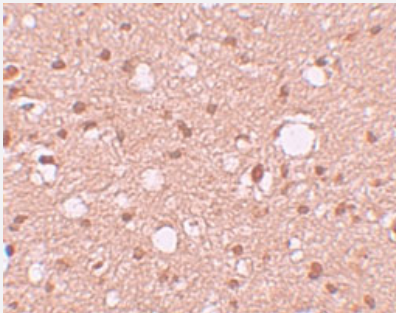
Catalog # PAB19334 Size 100 ug

Applications



Western Blot (Tissue lysate)

Western blot analysis of APBA2 in human brain tissue lysate with APBA2 polyclonal antibody (Cat # PAB19334) at (1) 1 and (2) 2 ug/mL.



Immunohistochemistry

Immunohistochemical staining of human brain cells with APBA2 polyclonal antibody (Cat # PAB19334) at 10 ug/mL.

Specification

Product Description	Rabbit polyclonal antibody raised against synthetic peptide of APBA2.
Immunogen	A synthetic peptide corresponding to 18 amino acids near internal region of human APBA2.
Host	Rabbit
Reactivity	Human
Form	Liquid
Purification	Peptide affinity purification

Concentration	1 mg/mL
Recommend Usage	Western Blot (1-2 ug/mL) Immunohistochemistry (10 ug/mL) The optimal working dilution should be determined by the end user.
Storage Buffer	In PBS (0.02% sodium azide)
Storage Instruction	Store at 4°C. For long term storage store at -20°C. Aliquot to avoid repeated freezing and thawing.
Note	This product contains sodium azide: a POISONOUS AND HAZARDOUS SUBSTANCE which should be handled by trained staff only.

Applications

- Western Blot (Tissue lysate)

Western blot analysis of APBA2 in human brain tissue lysate with APBA2 polyclonal antibody (Cat # PAB19334) at (1) 1 and (2) 2 ug/mL.

- Immunohistochemistry

Immunohistochemical staining of human brain cells with APBA2 polyclonal antibody (Cat # PAB19334) at 10 ug/mL.

- Enzyme-linked Immunoabsorbent Assay

Gene Info — APBA2

Entrez GeneID	321
Protein Accession#	NP_005494
Gene Name	APBA2
Gene Alias	D15S1518E, HsT16821, LIN-10, MGC99508, MGC:14091, MINT2, X11L
Gene Description	amyloid beta (A4) precursor protein-binding, family A, member 2
Omim ID	602712
Gene Ontology	Hyperlink

Gene Summary

The protein encoded by this gene is a member of the X11 protein family. It is a neuronal adapter protein that interacts with the Alzheimer's disease amyloid precursor protein (APP). It stabilizes APP and inhibits production of proteolytic APP fragments including the A beta peptide that is deposited in the brains of Alzheimer's disease patients. This gene product is believed to be involved in signal transduction processes. It is also regarded as a putative vesicular trafficking protein in the brain that can form a complex with the potential to couple synaptic vesicle exocytosis to neuronal cell adhesion. Multiple transcript variants encoding different isoforms have been found for this gene. [provided by RefSeq]

Other Designations

X11-like protein|adapter protein X11beta|amyloid beta (A4) precursor protein-binding, family A, member 2 (X11-like)|amyloid beta A4 precursor protein-binding, family A, member 2|neuron-specific X11L protein|neuronal munc18-1-interacting protein 2|phosphot

Disease

- [Autistic Disorder](#)
- [Child Development Disorders](#)
- [Chromosome Deletion](#)
- [Genetic Predisposition to Disease](#)
- [Mental Retardation](#)
- [Psychotic Disorders](#)
- [Schizophrenia](#)
- [Tobacco Use Disorder](#)