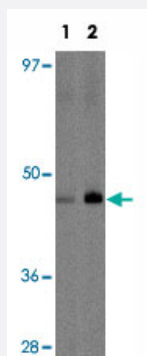


LOC388931 polyclonal antibody

Catalog # PAB19331

Size 100 ug

Applications



Western Blot (Tissue lysate)

Western blot analysis of LOC388931 in rat lung tissue lysate with LOC388931 polyclonal antibody (Cat # PAB19331) at (1) 1 and (2) 2 ug/mL.

Specification

Product Description	Rabbit polyclonal antibody raised against synthetic peptide of LOC388931.
Immunogen	A synthetic peptide corresponding to 15 amino acids near center region of human LOC388931.
Host	Rabbit
Reactivity	Human, Rat
Form	Liquid
Purification	Affinity purification
Concentration	1 mg/mL
Recommend Usage	Western blot (1-2 ug/mL) The optimal working dilution should be determined by the end user.
Storage Buffer	In PBS (0.02% sodium azide)
Storage Instruction	Store at 4°C for three months. For long term storage store at -20°C. Aliquot to avoid repeated freezing and thawing.

Note

This product contains sodium azide: a POISONOUS AND HAZARDOUS SUBSTANCE which should be handled by trained staff only.

Applications

- Western Blot (Tissue lysate)

Western blot analysis of LOC388931 in rat lung tissue lysate with LOC388931 polyclonal antibody (Cat # PAB19331) at (1) 1 and (2) 2 ug/mL.

- Enzyme-linked Immunoabsorbent Assay

Gene Info — LOC388931

Entrez GeneID	388931
Protein Accession#	NP_001073942
Gene Name	LOC388931
Gene Alias	-
Gene Description	hypothetical protein LOC388931
Gene Ontology	Hyperlink
Other Designations	-