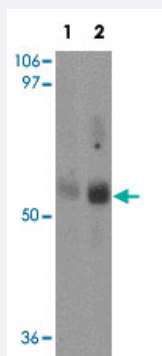


# MFSD2 polyclonal antibody

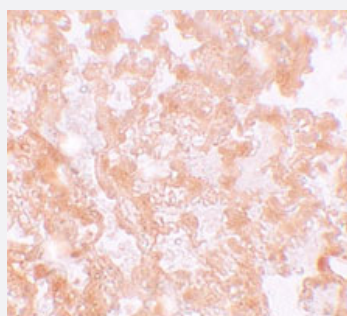
Catalog # PAB19330      Size 100 ug

## Applications



### Western Blot (Tissue lysate)

Western blot analysis of MFSD2 in rat lung tissue lysate with MFSD2 polyclonal antibody (Cat # PAB19330) at (1) 1 and (2) 2 ug/mL.



### Immunohistochemistry

Immunohistochemical staining of rat lung cells with MFSD2 polyclonal antibody (Cat # PAB19330) at 5 ug/mL.

## Specification

<b>Product Description</b>	Rabbit polyclonal antibody raised against synthetic peptide of MFSD2.
<b>Immunogen</b>	A synthetic peptide corresponding to 18 amino acids near C-terminus of human MFSD2.
<b>Host</b>	Rabbit
<b>Reactivity</b>	Human, Mouse, Rat
<b>Form</b>	Liquid
<b>Purification</b>	Peptide affinity purification

Concentration	1 mg/mL
Recommend Usage	Western Blot (1-2 ug/mL) Immunohistochemistry (5 ug/mL) The optimal working dilution should be determined by the end user.
Storage Buffer	In PBS (0.02% sodium azide)
Storage Instruction	Store at 4°C for up to one year. Aliquot to avoid repeated freezing and thawing.
Note	This product contains sodium azide: a POISONOUS AND HAZARDOUS SUBSTANCE which should be handled by trained staff only.

## Applications

- Western Blot (Tissue lysate)

Western blot analysis of MFSD2 in rat lung tissue lysate with MFSD2 polyclonal antibody (Cat # PAB19330) at (1) 1 and (2) 2 ug/mL.

- Immunohistochemistry

Immunohistochemical staining of rat lung cells with MFSD2 polyclonal antibody (Cat # PAB19330) at 5 ug/mL.

- Enzyme-linked Immunoabsorbent Assay

## Gene Info — MFSD2

Entrez GeneID	<a href="#">84879</a>
Protein Accession#	<a href="#">NP_001007452</a>
Gene Name	MFSD2
Gene Alias	FLJ14490, FLJ35904, FP1147, HMFN0656, PP10484, RP3-342P20.1
Gene Description	major facilitator superfamily domain containing 2
Gene Ontology	<a href="#">Hyperlink</a>
Other Designations	OTTHUMP00000010893

## Disease

- [Adenocarcinoma](#)
- [Carcinoma](#)
- [Lung Neoplasms](#)