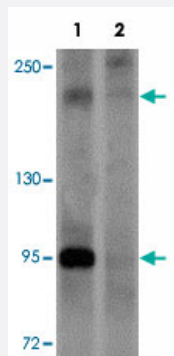


PAPPA2 polyclonal antibody

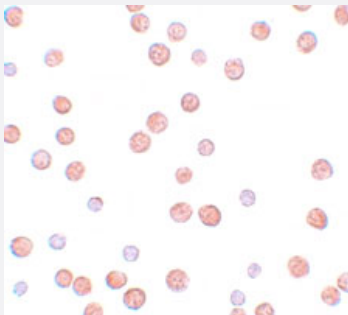
Catalog # PAB19327 Size 100 ug

Applications



Western Blot (Cell lysate)

Western blot analysis of PAPPA2 in HeLa cell lysate with PAPPA2 polyclonal antibody (Cat # PAB19327) at 1 ug/mL in (1) the absence and (2) the presence of blocking peptide.



Immunocytochemistry

Immunocytochemical staining of HeLa cells with PAPPA2 polyclonal antibody (Cat # PAB19327) at 10 ug/mL.

Specification

Product Description	Rabbit polyclonal antibody raised against synthetic peptide of PAPPA2.
Immunogen	A synthetic peptide corresponding to 15 amino acids near N-terminus of human PAPPA2.
Host	Rabbit
Reactivity	Human, Mouse, Rat
Form	Liquid
Purification	Peptide affinity purification

Concentration	1 mg/mL
Recommend Usage	Western Blot (1 ug/mL) Immunocytochemistry (10 ug/mL) The optimal working dilution should be determined by the end user.
Storage Buffer	In PBS (0.02% sodium azide)
Storage Instruction	Store at 4°C for three months. For long term storage store at -20°C. Aliquot to avoid repeated freezing and thawing.
Note	This product contains sodium azide: a POISONOUS AND HAZARDOUS SUBSTANCE which should be handled by trained staff only.

Applications

- Western Blot (Cell lysate)

Western blot analysis of PAPPA2 in HeLa cell lysate with PAPPA2 polyclonal antibody (Cat # PAB19327) at 1 ug/mL in (1) the absence and (2) the presence of blocking peptide.

- Immunocytochemistry

Immunocytochemical staining of HeLa cells with PAPPA2 polyclonal antibody (Cat # PAB19327) at 10 ug/mL.

- Enzyme-linked Immunoabsorbent Assay

Gene Info — PAPPA2

Entrez GeneID	60676
Protein Accession#	NP_064714
Gene Name	PAPPA2
Gene Alias	PAPP-A2, PAPPE, PLAC3
Gene Description	pappalysin 2
Gene Ontology	Hyperlink
Other Designations	OTTHUMP00000032951 OTTHUMP00000032980 placenta-specific 3 pregnancy-associated plasma preproprotein-A2 pregnancy-associated plasma protein-E

Disease

- [Tobacco Use Disorder](#)