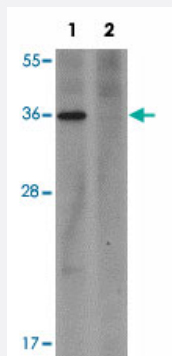


# PLAC1 polyclonal antibody

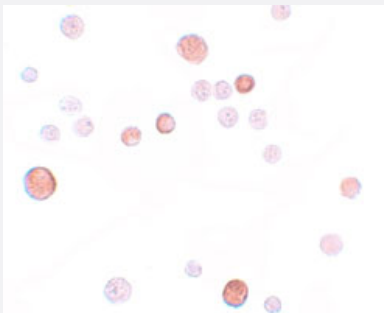
Catalog # PAB19325      Size 100 ug

## Applications



### Western Blot (Tissue lysate)

Western blot analysis of PLAC1 in human placenta tissue lysate with PLAC1 polyclonal antibody (Cat # PAB19325) at 1 ug/mL in (1) the absence and (2) the presence of blocking peptide.



### Immunocytochemistry

Immunocytochemical staining of HeLa cells with PLAC1 polyclonal antibody (Cat # PAB19325) at 10 ug/mL.

## Specification

<b>Product Description</b>	Rabbit polyclonal antibody raised against synthetic peptide of PLAC1.
<b>Immunogen</b>	A synthetic peptide corresponding to 15 amino acids near C-terminus of human PLAC1.
<b>Host</b>	Rabbit
<b>Reactivity</b>	Human
<b>Form</b>	Liquid
<b>Purification</b>	Peptide affinity purification

Concentration	1 mg/mL
Recommend Usage	Western Blot (1 ug/mL) Immunocytochemistry (10 ug/mL) The optimal working dilution should be determined by the end user.
Storage Buffer	In PBS (0.02% sodium azide)
Storage Instruction	Store at 4°C for three months. For long term storage store at -20°C. Aliquot to avoid repeated freezing and thawing.
Note	This product contains sodium azide: a POISONOUS AND HAZARDOUS SUBSTANCE which should be handled by trained staff only.

## Applications

- Western Blot (Tissue lysate)

Western blot analysis of PLAC1 in human placenta tissue lysate with PLAC1 polyclonal antibody (Cat # PAB19325) at 1 ug/mL in (1) the absence and (2) the presence of blocking peptide.

- Immunocytochemistry

Immunocytochemical staining of HeLa cells with PLAC1 polyclonal antibody (Cat # PAB19325) at 10 ug/mL.

- Enzyme-linked Immunoabsorbent Assay

## Gene Info — PLAC1

Entrez GeneID	<a href="#">10761</a>
Protein Accession#	<a href="#">NP_068568</a>
Gene Name	PLAC1
Gene Alias	-
Gene Description	placenta-specific 1
Omim ID	<a href="#">300296</a>
Gene Ontology	<a href="#">Hyperlink</a>
Other Designations	OTTHUMP00000024066