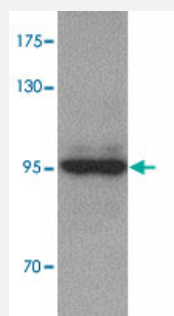


ATG9A polyclonal antibody

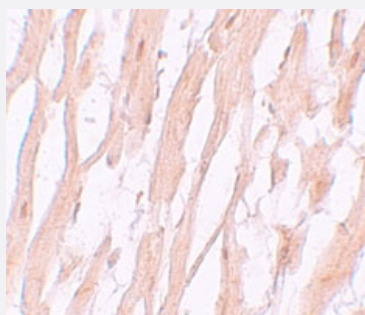
Catalog # PAB19324 Size 100 ug

Applications



Western Blot (Tissue lysate)

Western blot analysis of ATG9A in mouse heart tissue lysate with ATG9A polyclonal antibody (Cat # PAB19324) at 1 ug/mL.



Immunohistochemistry

Immunohistochemical staining of human heart cells with ATG9A polyclonal antibody (Cat # PAB19324) at 5 ug/mL.

Specification

Product Description	Rabbit polyclonal antibody raised against synthetic peptide of ATG9A.
Immunogen	A synthetic peptide corresponding to 18 amino acids near C-terminus of human ATG9A.
Host	Rabbit
Reactivity	Human, Mouse, Rat
Form	Liquid
Purification	Peptide affinity purification
Concentration	1 mg/mL

Recommend Usage	Western Blot (1 ug/mL) Immunohistochemistry (5 ug/mL) The optimal working dilution should be determined by the end user.
Storage Buffer	In PBS (0.02% sodium azide)
Storage Instruction	Store at 4°C for three months. For long term storage store at -20°C. Aliquot to avoid repeated freezing and thawing.
Note	This product contains sodium azide: a POISONOUS AND HAZARDOUS SUBSTANCE which should be handled by trained staff only.

Applications

- Western Blot (Tissue lysate)

Western blot analysis of ATG9A in mouse heart tissue lysate with ATG9A polyclonal antibody (Cat # PAB19324) at 1 ug/mL.

- Immunohistochemistry

Immunohistochemical staining of human heart cells with ATG9A polyclonal antibody (Cat # PAB19324) at 5 ug/mL.

- Enzyme-linked Immunoabsorbent Assay

Gene Info — ATG9A

Entrez GeneID	79065
Protein Accession#	NP_076990
Gene Name	ATG9A
Gene Alias	APG9L1, MGD3208
Gene Description	ATG9 autophagy related 9 homolog A (S. cerevisiae)
Gene Ontology	Hyperlink
Other Designations	APG9 autophagy 9-like 1 autophagy 9-like 1 protein

Disease

- [Head and Neck Neoplasms](#)

- [Neoplasm Recurrence](#)
- [Neoplasms](#)
- [Tobacco Use Disorder](#)