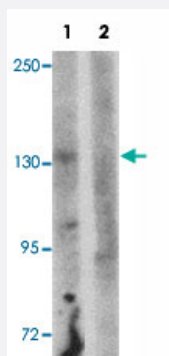


NLRP6 polyclonal antibody

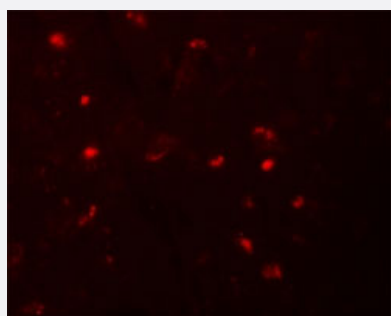
Catalog # PAB19304 Size 100 ug

Applications



Western Blot (Tissue lysate)

Western blot analysis of NLRP6 in mouse brain tissue lysate with NLRP6 polyclonal antibody (Cat # PAB19304) at 1 ug/mL in (1) the absence and (2) the presence of blocking peptide.



Immunofluorescence

Immunofluorescent staining of human brain cells with NLRP6 polyclonal antibody (Cat # PAB19304) at 20 ug/mL.

Specification

Product Description	Rabbit polyclonal antibody raised against synthetic peptide of NLRP6.
Immunogen	A synthetic peptide corresponding to 16 amino acids near N-terminus of human NLRP6.
Host	Rabbit
Reactivity	Human
Form	Liquid
Purification	Peptide affinity purification

Concentration	1 mg/mL
Recommend Usage	Western Blot (1 ug/mL) Immunofluorescence (20 ug/mL) The optimal working dilution should be determined by the end user.
Storage Buffer	In PBS (0.02% sodium azide)
Storage Instruction	Store at 4°C for three months. For long term storage store at -20°C. Aliquot to avoid repeated freezing and thawing.
Note	This product contains sodium azide: a POISONOUS AND HAZARDOUS SUBSTANCE which should be handled by trained staff only.

Applications

- Western Blot (Tissue lysate)

Western blot analysis of NLRP6 in mouse brain tissue lysate with NLRP6 polyclonal antibody (Cat # PAB19304) at 1 ug/mL in (1) the absence and (2) the presence of blocking peptide.

- Immunofluorescence

Immunofluorescent staining of human brain cells with NLRP6 polyclonal antibody (Cat # PAB19304) at 20 ug/mL.

- Enzyme-linked Immunoabsorbent Assay

Gene Info — NLRP6

Entrez GeneID	171389
Protein Accession#	NP_612202
Gene Name	NLRP6
Gene Alias	CLR11.4, NALP6, PAN3, PYPAF5
Gene Description	NLR family, pyrin domain containing 6
Omim ID	609650
Gene Ontology	Hyperlink

Gene Summary

NALPs are cytoplasmic proteins that form a subfamily within the larger CATERPILLER protein family. Most short NALPs, such as NALP6, have an N-terminal pyrin (MEFV; MIM 608107) domain (PYD), followed by a NACHT domain, a NACHT-associated domain (NAD), and a C-terminal leucine-rich repeat (LRR) region. The long NALP, NALP1 (MIM 606636), also has a C-terminal extension containing a function to find domain (FIIND) and a caspase recruitment domain (CARD). NALPs are implicated in the activation of proinflammatory caspases (e.g., CASP1; MIM 147678) via their involvement in multiprotein complexes called inflammasomes (Tschopp et al., 2003 [PubMed 12563287]).[supplied by OMIM]

Other Designations

NACHT, LRR and PYD containing protein 6|NACHT, leucine rich repeat and PYD containing 6|OTTHUMP00000147611|PYRIN-containing APAF1-like protein 5|nucleotide-binding oligomerization domain, leucine rich repeat and pyrin domain containing 6

Disease

- [Crohn Disease](#)
- [Genetic Predisposition to Disease](#)