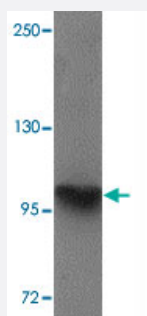


# NLRP4 polyclonal antibody

Catalog # PAB19302      Size 100 ug

## Applications



### Western Blot (Cell lysate)

Western blot analysis of NLRP4 in K-562 cell lysate with NLRP4 polyclonal antibody (Cat # PAB19302) at 1 ug/mL.

## Specification

<b>Product Description</b>	Rabbit polyclonal antibody rasied against synthetic peptide of NLRP4.
<b>Immunogen</b>	A synthetic peptide corresponding to 13 amino acids near center region of human NLRP4.
<b>Host</b>	Rabbit
<b>Reactivity</b>	Human, Mouse
<b>Form</b>	Liquid
<b>Purification</b>	Affinity purification
<b>Concentration</b>	1 mg/mL
<b>Recommend Usage</b>	Western blot (1-2 ug/mL) The optimal working dilution should be determined by the end user.
<b>Storage Buffer</b>	In PBS (0.02% sodium azide)
<b>Storage Instruction</b>	Store at 4°C for three months. For long term storage store at -20°C. Aliquot to avoid repeated freezing and thawing.

## Note

This product contains sodium azide: a POISONOUS AND HAZARDOUS SUBSTANCE which should be handled by trained staff only.

## Applications

- Western Blot (Cell lysate)

Western blot analysis of NLRP4 in K-562 cell lysate with NLRP4 polyclonal antibody (Cat # PAB19302) at 1 ug/mL.

- Enzyme-linked Immunoabsorbent Assay

## Gene Info — NLRP4

**Entrez GeneID** [147945](#)

**Protein Accession#** [AAL35293](#)

**Gene Name** NLRP4

**Gene Alias** CLR19.5, FLJ32126, NALP4, PAN2, PYPAF4, RNH2

**Gene Description** NLR family, pyrin domain containing 4

**Omim ID** [609645](#)

**Gene Ontology** [Hyperlink](#)

**Gene Summary** NALPs are cytoplasmic proteins that form a subfamily within the larger CATERPILLER protein family. Most short NALPs, such as NALP4, have an N-terminal pyrin (MEFV; MIM 608107) domain (PYD), followed by a NACHT domain, a NACHT-associated domain (NAD), and a C-terminal leucine-rich repeat (LRR) region. The long NALP, NALP1 (MIM 606636), also has a C-terminal extension containing a function to find domain (FIIND) and a caspase recruitment domain (CARD). NALPs are implicated in the activation of proinflammatory caspases (e.g., CASP1; MIM 147678) via their involvement in multiprotein complexes called inflammasomes (Tschopp et al., 2003 [PubMed 12563287]).[supplied by OMIM]

**Other Designations** NACHT, LRR and PYD containing protein 4|NACHT, leucine rich repeat and PYD containing 4|PADA and NACHT-containing protein 2|PYRIN-containing APAF1-like protein 4|nucleotide-binding oligomerization domain, leucine rich repeat and pyrin domain containing 4|

## Disease

- [Crohn Disease](#)

- [Genetic Predisposition to Disease](#)