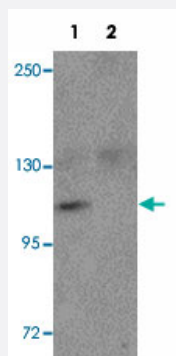


NLRP9 polyclonal antibody

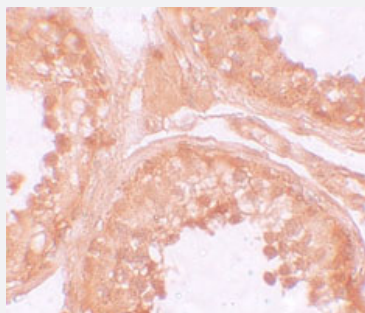
Catalog # PAB19301 Size 100 ug

Applications



Western Blot (Cell lysate)

Western blot analysis of NLRP9 in EL4 cell lysate with NLRP9 polyclonal antibody (Cat # PAB19301) at 1 ug/mL in the (1) absence and (2) presence of blocking peptide.



Immunohistochemistry

Immunohistochemical staining of human testis cells with NLRP9 polyclonal antibody (Cat # PAB19301) at 10 ug/mL.

Specification

Product Description	Rabbit polyclonal antibody rasied against synthetic peptide of NLRP9.
Immunogen	A synthetic peptide corresponding to 14 amino acids near N-terminus of human NLRP9.
Host	Rabbit
Reactivity	Human, Mouse
Form	Liquid
Purification	Peptide affinity purification

Concentration	1 mg/mL
Recommend Usage	Western Blot (1 ug/mL) Immunohistochemistry (10 ug/mL) The optimal working dilution should be determined by the end user.
Storage Buffer	In PBS (0.02% sodium azide)
Storage Instruction	Store at 4°C for three months. For long term storage store at -20°C. Aliquot to avoid repeated freezing and thawing.
Note	This product contains sodium azide: a POISONOUS AND HAZARDOUS SUBSTANCE which should be handled by trained staff only.

Applications

- Western Blot (Cell lysate)

Western blot analysis of NLRP9 in EL4 cell lysate with NLRP9 polyclonal antibody (Cat # PAB19301) at 1 ug/mL in the (1) absence and (2) presence of blocking peptide.

- Immunohistochemistry

Immunohistochemical staining of human testis cells with NLRP9 polyclonal antibody (Cat # PAB19301) at 10 ug/mL.

- Enzyme-linked Immunoabsorbent Assay

Gene Info — NLRP9

Entrez GeneID	338321
Protein Accession#	Q7RTR0
Gene Name	NLRP9
Gene Alias	CLR19.1, NALP9, NOD6, PAN12
Gene Description	NLR family, pyrin domain containing 9
Omim ID	609663
Gene Ontology	Hyperlink

Gene Summary

The protein encoded by this gene belongs to the NALP protein family. Members of the NALP protein family typically contain a NACHT domain, a NACHT-associated domain (NAD), a C-terminal leucine-rich repeat (LRR) region, and an N-terminal pyrin domain (PYD). This protein may play a regulatory role in the innate immune system as similar family members belong to the signal-induced multiprotein complex, the inflammasome, that activates the pro-inflammatory caspases, caspase-1 and caspase-5. [provided by RefSeq]

Other Designations

NACHT, LRR and PYD containing protein 9|NACHT, leucine rich repeat and PYD containing 9|nucleotide-binding oligomerization domain, leucine rich repeat and pyrin domain containing 9

Disease

- [Crohn Disease](#)
- [Genetic Predisposition to Disease](#)