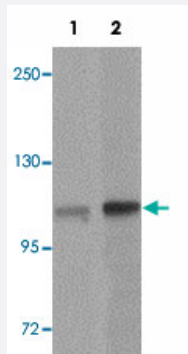


NLRX1 polyclonal antibody

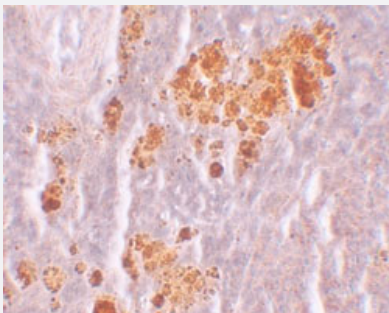
Catalog # PAB19300 Size 100 ug

Applications



Western Blot (Tissue lysate)

Western blot analysis of NLRX1 in rat spleen tissue lysate with NLRX1 polyclonal antibody (Cat # PAB19300) at (1) 1 and (2) 2 ug/mL.



Immunohistochemistry

Immunohistochemical staining of rat spleen cells with NLRX1 polyclonal antibody (Cat # PAB19300) at 10 ug/mL.

Specification

Product Description	Rabbit polyclonal antibody raised against synthetic peptide of NLRX1.
Immunogen	A synthetic peptide corresponding to 14 amino acids near N-terminus of human NLRX1.
Host	Rabbit
Reactivity	Human, Mouse, Rat
Form	Liquid
Purification	Peptide affinity purification

Concentration	1 mg/mL
Recommend Usage	Western Blot (1-2 ug/mL) Immunohistochemistry (10 ug/mL) The optimal working dilution should be determined by the end user.
Storage Buffer	In PBS (0.02% sodium azide)
Storage Instruction	Store at 4°C for three months. For long term storage store at -20°C. Aliquot to avoid repeated freezing and thawing.
Note	This product contains sodium azide: a POISONOUS AND HAZARDOUS SUBSTANCE which should be handled by trained staff only.

Applications

- Western Blot (Tissue lysate)

Western blot analysis of NLRX1 in rat spleen tissue lysate with NLRX1 polyclonal antibody (Cat # PAB19300) at (1) 1 and (2) 2 ug/mL.

- Immunohistochemistry

Immunohistochemical staining of rat spleen cells with NLRX1 polyclonal antibody (Cat # PAB19300) at 10 ug/mL.

- Enzyme-linked Immunoabsorbent Assay

Gene Info — NLRX1

Entrez GeneID	79671
Protein Accession#	NP_078894
Gene Name	NLRX1
Gene Alias	CLR11.3, DLNB26, FLJ21478, MGC131937, MGC21025, NOD26, NOD5, NOD9
Gene Description	NLR family member X1
Gene Ontology	Hyperlink
Gene Summary	This gene encodes a member of the NLR family. Alternative splicing has been observed at this gene locus and two transcript variants, encoding distinct isoforms, have been identified. [provided by RefSeq]
Other Designations	NLR family, X1 NOD-like receptor X1 nucleotide-binding oligomerization domain, leucine rich repeat containing X1

Disease

- [Cardiovascular Diseases](#)
- [Diabetes Mellitus](#)
- [Edema](#)