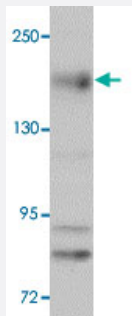


NLRC5 polyclonal antibody

Catalog # PAB19299 Size 100 ug

Applications



Western Blot (Cell lysate)

Western blot analysis of NLRC5 in EL4 cell lysate with NLRC5 polyclonal antibody (Cat # PAB19299) at 1 ug/mL.



Immunocytochemistry

Immunocytochemical staining of HeLa cells with NLRC5 polyclonal antibody (Cat # PAB19299) at 10 ug/mL.

Specification

Product Description	Rabbit polyclonal antibody raised against synthetic peptide of NLRC5.
Immunogen	A synthetic peptide corresponding to 18 amino acids near N-terminus of human NLRC5.
Host	Rabbit
Reactivity	Human, Mouse
Form	Liquid
Purification	Peptide affinity purification
Concentration	1 mg/mL

Recommend Usage	Western Blot (1 ug/mL) Immunocytochemistry (10 ug/mL) The optimal working dilution should be determined by the end user.
Storage Buffer	In PBS (0.02% sodium azide)
Storage Instruction	Store at 4°C for three months. For long term storage store at -20°C. Aliquot to avoid repeated freezing and thawing.
Note	This product contains sodium azide: a POISONOUS AND HAZARDOUS SUBSTANCE which should be handled by trained staff only.

Applications

- Western Blot (Cell lysate)

Western blot analysis of NLRC5 in EL4 cell lysate with NLRC5 polyclonal antibody (Cat # PAB19299) at 1 ug/mL.

- Immunocytochemistry

Immunocytochemical staining of HeLa cells with NLRC5 polyclonal antibody (Cat # PAB19299) at 10 ug/mL.

- Enzyme-linked Immunoabsorbent Assay

Gene Info — NLRC5

Entrez GeneID	84166
Protein Accession#	NP_115582
Gene Name	NLRC5
Gene Alias	CLR16.1, FLJ21709, FLJ39711, NOD27, NOD4
Gene Description	NLR family, CARD domain containing 5
Gene Ontology	Hyperlink
Gene Summary	O
Other Designations	NOD-like receptor C5[OTTHUMP00000164675]nucleotide-binding oligomerization domain, leucine rich repeat and CARD domain containing 5[nucleotide-binding oligomerization domains 27

Disease

- [Diabetes Mellitus](#)
- [Genetic Predisposition to Disease](#)
- [Kidney Failure](#)