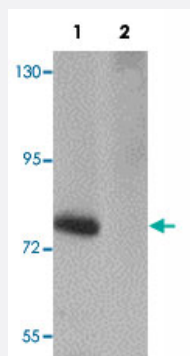


SESTD1 polyclonal antibody

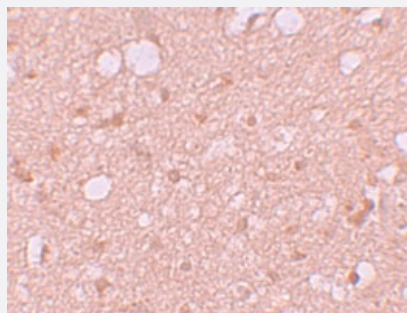
Catalog # PAB19291 Size 100 ug

Applications



Western Blot (Tissue lysate)

Western blot analysis of SESTD1 in rat brain tissue lysate with SESTD1 polyclonal antibody (Cat # PAB19291) at 1 ug/mL in (1) the absence and (2) the presence of blocking peptide.



Immunohistochemistry

Immunohistochemical staining of human brain cells with SESTD1 polyclonal antibody (Cat # PAB19291) at 5 ug/mL.

Specification

Product Description	Rabbit polyclonal antibody raised against synthetic peptide of SESTD1.
Immunogen	A synthetic peptide corresponding to 15 amino acids near C-terminus of human SESTD1.
Host	Rabbit
Reactivity	Human, Mouse, Rat
Form	Liquid
Purification	Peptide affinity purification

Concentration	1 mg/mL
Recommend Usage	Western Blot (1 ug/mL) Immunohistochemistry (5 ug/mL) The optimal working dilution should be determined by the end user.
Storage Buffer	In PBS (0.02% sodium azide)
Storage Instruction	Store at 4°C for three months. For long term storage store at -20°C. Aliquot to avoid repeated freezing and thawing.
Note	This product contains sodium azide: a POISONOUS AND HAZARDOUS SUBSTANCE which should be handled by trained staff only.

Applications

- Western Blot (Tissue lysate)

Western blot analysis of SESTD1 in rat brain tissue lysate with SESTD1 polyclonal antibody (Cat # PAB19291) at 1 ug/mL in (1) the absence and (2) the presence of blocking peptide.

- Immunohistochemistry

Immunohistochemical staining of human brain cells with SESTD1 polyclonal antibody (Cat # PAB19291) at 5 ug/mL.

- Enzyme-linked Immunoabsorbent Assay

Gene Info — SESTD1

Entrez GeneID	91404
Protein Accession#	NP_835224
Gene Name	SESTD1
Gene Alias	DKFZp434O0515, SOLO
Gene Description	SEC14 and spectrin domains 1
Gene Ontology	Hyperlink
Other Designations	huntingtin-interacting protein-like protein

Disease

- [Celiac Disease](#)
- [Disease Progression](#)
- [Disease Susceptibility](#)
- [Genetic Predisposition to Disease](#)
- [HIV Infections](#)
- [Tobacco Use Disorder](#)