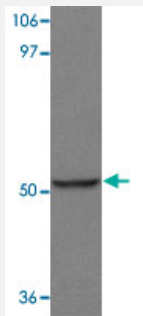


# AFP polyclonal antibody

Catalog # PAB19287

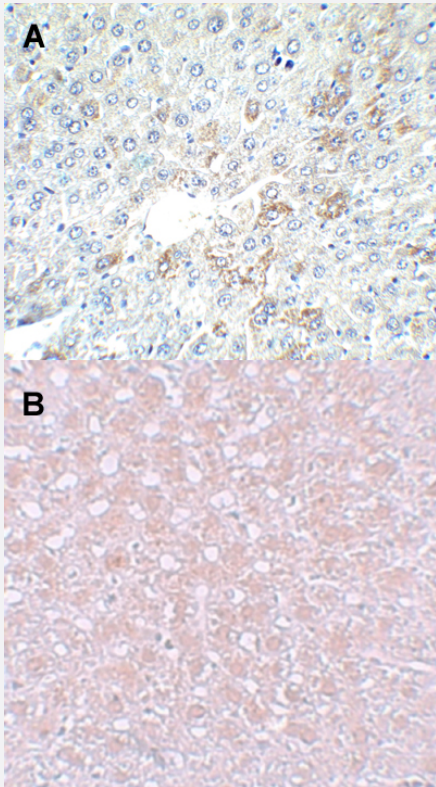
Size 100 ug

## Applications



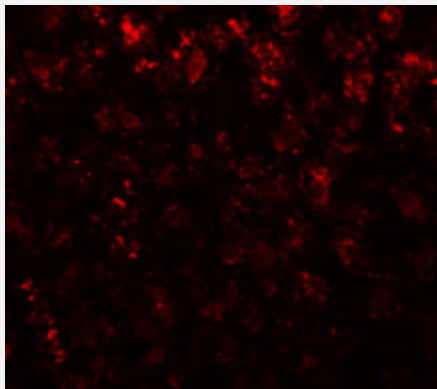
### Western Blot (Tissue lysate)

Western blot analysis of AFP in human liver tissue lysate with AFP polyclonal antibody (Cat # PAB19287) at 1 ug/mL.



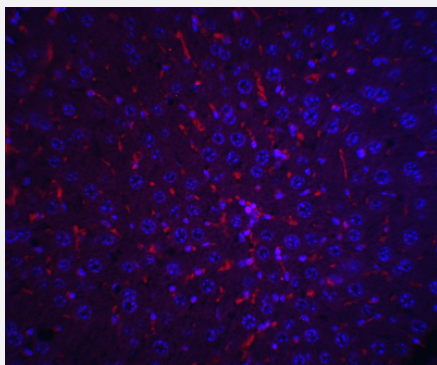
### Immunohistochemistry

Immunohistochemical staining of (A) mouse liver tissue with AFP polyclonal antibody (Cat # PAB19287) at 2.5 ug/mL (B) rat liver tissue with AFP polyclonal antibody (Cat # PAB19287) at 10 ug/mL.



### Immunofluorescence

Immunofluorescence staining of rat liver with AFP polyclonal antibody (Cat # PAB19287) at 20 ug/mL.



### Immunofluorescence

Immunofluorescence staining of mouse liver tissue with AFP polyclonal antibody (Cat # PAB19287) at 20 ug/mL.

Red: AFP polyclonal antibody (Cat # PAB19287) Blue: DAPI staining

## Specification

<b>Product Description</b>	Rabbit polyclonal antibody raised against synthetic peptide of AFP.
<b>Immunogen</b>	A synthetic peptide corresponding to 14 amino acids near the center of human AFP. The immunogen is located within amino acids 340-390 of AFP.
<b>Host</b>	Rabbit
<b>Reactivity</b>	Human, Mouse, Rat
<b>Form</b>	Liquid
<b>Purification</b>	Peptide affinity purification
<b>Concentration</b>	1 mg/mL
<b>Recommend Usage</b>	ELISA Immunofluorescence (20 ug/mL) Immunohistochemistry (10 ug/mL) Western Blot (1 ug/mL) The optimal working dilution should be determined by the end user.
<b>Storage Buffer</b>	In PBS (0.02% sodium azide).

**Storage Instruction**

Store at 4°C for three months. For long term storage store at -20°C.  
Aliquot to avoid repeated freezing and thawing. Antibodies should not be exposed to prolonged high temperatures.

**Note**

This product contains sodium azide: a POISONOUS AND HAZARDOUS SUBSTANCE which should be handled by trained staff only.

## Applications

- Western Blot (Tissue lysate)

Western blot analysis of AFP in human liver tissue lysate with AFP polyclonal antibody (Cat # PAB19287) at 1 ug/mL.

- Immunohistochemistry

Immunohistochemical staining of (A) mouse liver tissue with AFP polyclonal antibody (Cat # PAB19287) at 2.5 ug/mL (B) rat liver tissue with AFP polyclonal antibody (Cat # PAB19287) at 10 ug/mL.

- Immunofluorescence

Immunofluorescence staining of rat liver with AFP polyclonal antibody (Cat # PAB19287) at 20 ug/mL.

- Immunofluorescence

Immunofluorescence staining of mouse liver tissue with AFP polyclonal antibody (Cat # PAB19287) at 20 ug/mL.  
Red: AFP polyclonal antibody (Cat # PAB19287) Blue: DAPI staining

- Enzyme-linked Immunoabsorbent Assay

## Gene Info — AFP

**Entrez GeneID**[174](#)**Protein Accession#**[NP\\_001125](#)**Gene Name**

AFP

**Gene Alias**

FETA, HPAPF

**Gene Description**

alpha-fetoprotein

**Omim ID**[104150](#)**Gene Ontology**[Hyperlink](#)

**Gene Summary**

This gene encodes alpha-fetoprotein, a major plasma protein produced by the yolk sac and the liver during fetal life. Alpha-fetoprotein expression in adults is often associated with hepatoma or teratoma. However, hereditary persistence of alpha-fetoprotein may also be found in individuals with no obvious pathology. The protein is thought to be the fetal counterpart of serum albumin, and the alpha-fetoprotein and albumin genes are present in tandem in the same transcriptional orientation on chromosome 4. Alpha-fetoprotein is found in monomeric as well as dimeric and trimeric forms, and binds copper, nickel, fatty acids and bilirubin. The level of alpha-fetoprotein in amniotic fluid is used to measure renal loss of protein to screen for spina bifida and anencephaly. [provided by RefSeq]

**Other Designations**

OTTHUMP00000160480|alpha-1-fetoprotein|alpha-fetoglobulin

**Disease**

- [Carcinoma](#)
- [Liver Cirrhosis](#)
- [Liver Neoplasms](#)