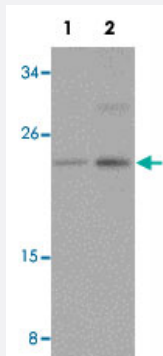


CABP7 polyclonal antibody

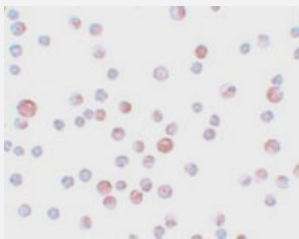
Catalog # PAB19283 Size 100 ug

Applications



Western Blot (Cell lysate)

Western blot analysis of CABP7 in HeLa cell lysate with CABP7 polyclonal antibody (Cat # PAB19283) at (1) 1 and (2) 2 ug/mL.



Immunocytochemistry

Immunocytochemistry of HeLa cells with CABP7 polyclonal antibody (Cat # PAB19283) at 4 ug/mL.

Specification

Product Description	Rabbit polyclonal antibody raised against synthetic peptide of CABP7.
Immunogen	A synthetic peptide corresponding to 15 amino acids near N-terminus of human CABP7.
Host	Rabbit
Reactivity	Human, Mouse, Rat
Form	Liquid
Purification	Peptide affinity purification

Concentration	1 mg/mL
Recommend Usage	Western Blot (1-2 ug/mL) Immunocytochemistry (4 ug/mL) The optimal working dilution should be determined by the end user.
Storage Buffer	In PBS (0.02% sodium azide)
Storage Instruction	Store at 4°C for three months. For long term storage store at -20°C. Aliquot to avoid repeated freezing and thawing.
Note	This product contains sodium azide: a POISONOUS AND HAZARDOUS SUBSTANCE which should be handled by trained staff only.

Applications

- Western Blot (Cell lysate)

Western blot analysis of CABP7 in HeLa cell lysate with CABP7 polyclonal antibody (Cat # PAB19283) at (1) 1 and (2) 2 ug/mL.

- Immunocytochemistry

Immunocytochemistry of HeLa cells with CABP7 polyclonal antibody (Cat # PAB19283) at 4 ug/mL.

- Enzyme-linked Immunoabsorbent Assay

Gene Info — CABP7

Entrez GeneID	164633
Protein Accession#	NP_872333
Gene Name	CABP7
Gene Alias	MGC57793
Gene Description	calcium binding protein 7
Gene Ontology	Hyperlink
Other Designations	-

Publication Reference

- [Non-conventional Axonal Organelles Control TRPM8 Ion Channel Trafficking and Peripheral Cold Sensing.](#)

Cornejo VH, González C, Campos M, Vargas-Saturno L, Juricic MLÁ, Miserey-Lenkei S, Pertusa M, Madrid R, Couve A.
Cell Reports 2020 Mar; 30(13):4505.

Application: IF, Mouse, DRG cells