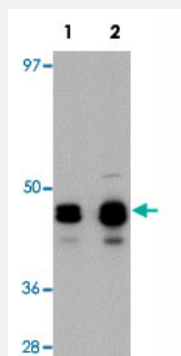


SCRN2 polyclonal antibody

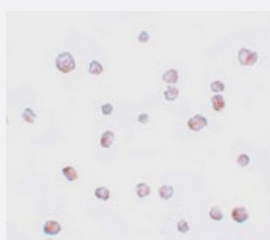
Catalog # PAB19279 Size 100 ug

Applications



Western Blot (Cell lysate)

Western blot analysis of SCRN2 in 293 cell lysate with SCRN2 polyclonal antibody (Cat # PAB19279) at (1) 0.5 and (2) 1 ug/mL.



Immunocytochemistry

Immunocytochemistry of 293 cells with SCRN2 polyclonal antibody (Cat # PAB19279) at 20 ug/mL.

Specification

Product Description	Rabbit polyclonal antibody raised against synthetic peptide of SCRN2.
Immunogen	A synthetic peptide corresponding to 18 amino acids near C-terminus of human SCRN2.
Host	Rabbit
Reactivity	Human, Mouse, Rat
Form	Liquid
Purification	Peptide affinity purification

Concentration	1 mg/mL
Recommend Usage	Western Blot (0.5-1 ug/mL) Immunocytochemistry (20 ug/mL) The optimal working dilution should be determined by the end user.
Storage Buffer	In PBS (0.02% sodium azide)
Storage Instruction	Store at 4°C for three months. For long term storage store at -20°C. Aliquot to avoid repeated freezing and thawing.
Note	This product contains sodium azide: a POISONOUS AND HAZARDOUS SUBSTANCE which should be handled by trained staff only.

Applications

- Western Blot (Cell lysate)

Western blot analysis of SCRN2 in 293 cell lysate with SCRN2 polyclonal antibody (Cat # PAB19279) at (1) 0.5 and (2) 1 ug/mL.

- Immunocytochemistry

Immunocytochemistry of 293 cells with SCRN2 polyclonal antibody (Cat # PAB19279) at 20 ug/mL.

- Enzyme-linked Immunoabsorbent Assay

Gene Info — SCRN2

Entrez GeneID	90507
Protein Accession#	EAW94970
Gene Name	SCRN2
Gene Alias	Ses2
Gene Description	secernin 2
Gene Ontology	Hyperlink
Other Designations	-