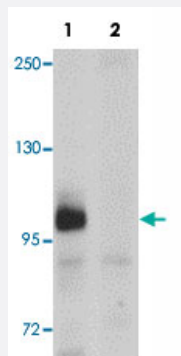


ZC3HAV1 polyclonal antibody

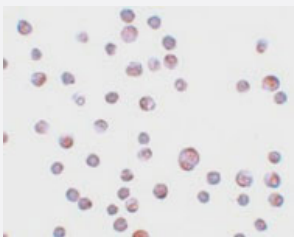
Catalog # PAB19275 Size 100 ug

Applications



Western Blot (Cell lysate)

Western blot analysis of ZC3HAV1 in HeLa cell lysate with ZC3HAV1 polyclonal antibody (Cat # PAB19275) at 1ug/mL in (1) the absence and (2) the presence of blocking peptide.



Immunocytochemistry

Immunocytochemistry of HeLa cells with ZC3HAV1 polyclonal antibody (Cat # PAB19275) at 20 ug/mL.

Specification

Product Description	Rabbit polyclonal antibody raised against synthetic peptide of ZC3HAV1.
Immunogen	A synthetic peptide corresponding to 14 amino acids near C-terminus of human ZC3HAV1.
Host	Rabbit
Reactivity	Human
Form	Liquid
Purification	Peptide affinity purification

Concentration	1 mg/mL
Recommend Usage	Western Blot (1 ug/mL) Immunocytochemistry (20 ug/mL) The optimal working dilution should be determined by the end user.
Storage Buffer	In PBS (0.02% sodium azide)
Storage Instruction	Store at 4°C for three months. For long term storage store at -20°C. Aliquot to avoid repeated freezing and thawing.
Note	This product contains sodium azide: a POISONOUS AND HAZARDOUS SUBSTANCE which should be handled by trained staff only.

Applications

- Western Blot (Cell lysate)

Western blot analysis of ZC3HAV1 in HeLa cell lysate with ZC3HAV1 polyclonal antibody (Cat # PAB19275) at 1ug/mL in (1) the absence and (2) the presence of blocking peptide.

- Immunocytochemistry

Immunocytochemistry of HeLa cells with ZC3HAV1 polyclonal antibody (Cat # PAB19275) at 20 ug/mL.

- Enzyme-linked Immunoabsorbent Assay

Gene Info — ZC3HAV1

Entrez GeneID	56829
Protein Accession#	NP_078901
Gene Name	ZC3HAV1
Gene Alias	DKFZp686F2052, DKFZp686H1869, DKFZp686O19171, FLB6421, FLJ13288, MGC48898, ZAP, ZC3H2, ZC3HDC2
Gene Description	zinc finger CCCH-type, antiviral 1
Omim ID	607312
Gene Ontology	Hyperlink

Gene Summary

This gene encodes a CCCH-type zinc finger protein that is thought to prevent infection by retroviruses. Studies of the rat homolog indicate that the protein may primarily function to inhibit viral gene expression and induce an innate immunity to viral infection. Alternative splicing occurs at this locus and two variants, each encoding distinct isoforms, are described. [provided by RefSeq]

Other Designations

CCCH-type zinc finger antiviral protein|zinc finger CCCH type, antiviral 1|zinc finger antiviral protein