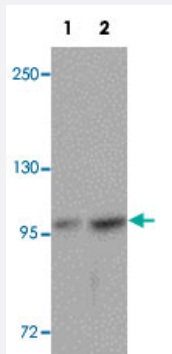


FREM2 polyclonal antibody

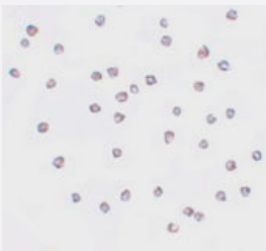
Catalog # PAB19271 Size 100 ug

Applications



Western Blot (Cell lysate)

Western blot analysis of FREM2 in A-20 cell lysate with FREM2 polyclonal antibody (Cat # PAB19271) at (1) 0.5 and (2) 1ug/mL.



Immunocytochemistry

Immunocytochemistry of A-20 cells with FREM2 polyclonal antibody (Cat # PAB19271) at 20 ug/mL.

Specification

Product Description	Rabbit polyclonal antibody rasied against synthetic peptide of FREM2.
Immunogen	A synthetic peptide corresponding to 19 amino acids near internal region of human FREM2.
Host	Rabbit
Reactivity	Human, Mouse
Form	Liquid
Purification	Peptide affinity purification

Concentration	1 mg/mL
Recommend Usage	Western Blot (0.5-1 ug/mL) Immunocytochemistry (20 ug/mL) The optimal working dilution should be determined by the end user.
Storage Buffer	In PBS (0.02% sodium azide)
Storage Instruction	Store at 4°C for three months. For long term storage store at -20°C. Aliquot to avoid repeated freezing and thawing.
Note	This product contains sodium azide: a POISONOUS AND HAZARDOUS SUBSTANCE which should be handled by trained staff only.

Applications

- Western Blot (Cell lysate)

Western blot analysis of FREM2 in A-20 cell lysate with FREM2 polyclonal antibody (Cat # PAB19271) at (1) 0.5 and (2) 1ug/mL.

- Immunocytochemistry

Immunocytochemistry of A-20 cells with FREM2 polyclonal antibody (Cat # PAB19271) at 20 ug/mL.

- Enzyme-linked Immunoabsorbent Assay

Gene Info — FREM2

Entrez GeneID	341640
Protein Accession#	NP_997244
Gene Name	FREM2
Gene Alias	DKFZp686J0811, DKFZp781I048, KIAA1074
Gene Description	FRAS1 related extracellular matrix protein 2
Omim ID	219000 608945
Gene Ontology	Hyperlink

Gene Summary

This gene encodes a membrane protein that belongs to the FRAS1 family. This extracellular matrix protein is thought to be required for maintaining the integrity of the skin epithelium and the differentiated state of renal epithelia. The protein localizes to the basement membrane, forming a ternary complex that plays a role in epidermal-dermal interactions during morphogenetic processes. Mutations in this gene are associated with Fraser syndrome. [provided by RefSeq]

Other Designations

ECM3 homolog|FRAS1-related extracellular matrix protein 2|OTTHUMP00000018288|OTTHUMP00000018289