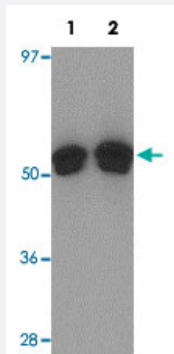


# FOXO4 polyclonal antibody

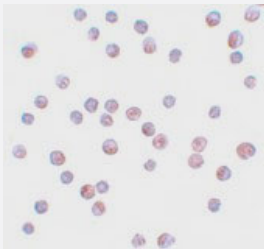
Catalog # PAB19264      Size 100 ug

## Applications



### Western Blot (Cell lysate)

Western blot analysis of FOXO4 in A-20 cell lysate with FOXO4 polyclonal antibody (Cat # PAB19264) at (1) 0.5 and (2) 1 ug/mL.



### Immunocytochemistry

Immunocytochemistry of HeLa cells with FOXO4 polyclonal antibody (Cat # PAB19264) at 10 ug/mL.

## Specification

<b>Product Description</b>	Rabbit polyclonal antibody raised against synthetic peptide of FOXO4.
<b>Immunogen</b>	A synthetic peptide corresponding to 15 amino acids near N-terminus of human FOXO4.
<b>Host</b>	Rabbit
<b>Reactivity</b>	Human, Mouse, Rat
<b>Form</b>	Liquid
<b>Purification</b>	Peptide affinity purification

Concentration	1 mg/mL
Recommend Usage	Western Blot (0.5-1 ug/mL) Immunocytochemistry (10 ug/mL) The optimal working dilution should be determined by the end user.
Storage Buffer	In PBS (0.02% sodium azide)
Storage Instruction	Store at 4°C for three months. For long term storage store at -20°C. Aliquot to avoid repeated freezing and thawing.
Note	This product contains sodium azide: a POISONOUS AND HAZARDOUS SUBSTANCE which should be handled by trained staff only.

## Applications

- Western Blot (Cell lysate)

Western blot analysis of FOXO4 in A-20 cell lysate with FOXO4 polyclonal antibody (Cat # PAB19264) at (1) 0.5 and (2) 1 ug/mL.

- Immunocytochemistry

Immunocytochemistry of HeLa cells with FOXO4 polyclonal antibody (Cat # PAB19264) at 10 ug/mL.

- Enzyme-linked Immunoabsorbent Assay

## Gene Info — FOXO4

Entrez GeneID	<a href="#">4303</a>
Protein Accession#	<a href="#">NP_005929</a>
Gene Name	FOXO4
Gene Alias	AFX, AFX1, MGC120490, MLLT7
Gene Description	forkhead box O4
Omim ID	<a href="#">300033</a>
Gene Ontology	<a href="#">Hyperlink</a>
Gene Summary	7 myeloid/lymphoid or mixed-lineage leukemia (trithorax homolog

**Other Designations**

OTTHUMP00000023496|myeloid/lymphoid or mixed-lineage leukemia (trithorax homolog); translocated to, 7|myeloid/lymphoid or mixed-lineage leukemia (trithorax homolog, Drosophila); translocated to, 7

---

**Disease**

- [Obesity](#)