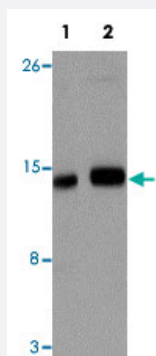


IFITM1 polyclonal antibody

Catalog # PAB19260

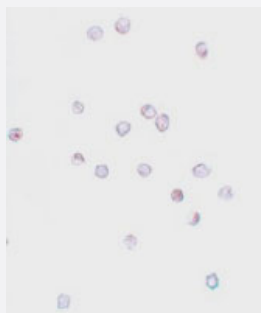
Size 100 ug

Applications



Western Blot (Cell lysate)

Western blot analysis of IFITM1 in NIH/3T3 cell lysate with IFITM1 polyclonal antibody (Cat # PAB19260) at (1) 1 and (2) 2 ug/mL.



Immunocytochemistry

Immunocytochemistry of Jurkat cells with IFITM1 polyclonal antibody (Cat # PAB19260) at 20 ug/mL.

Specification

Product Description

Rabbit polyclonal antibody raised against synthetic peptide of IFITM1.

Immunogen

A synthetic peptide corresponding to 16 amino acids near internal region of human IFITM1.

Host

Rabbit

Reactivity

Human, Mouse, Rat

Form

Liquid

Purification

Peptide affinity purification

Concentration	1 mg/mL
Recommend Usage	Western Blot (1-2 ug/mL) Immunocytochemistry (20 ug/mL) The optimal working dilution should be determined by the end user.
Storage Buffer	In PBS (0.02% sodium azide)
Storage Instruction	Store at 4°C for three months. For long term storage store at -20°C. Aliquot to avoid repeated freezing and thawing.
Note	This product contains sodium azide: a POISONOUS AND HAZARDOUS SUBSTANCE which should be handled by trained staff only.

Applications

- Western Blot (Cell lysate)

Western blot analysis of IFITM1 in NIH/3T3 cell lysate with IFITM1 polyclonal antibody (Cat # PAB19260) at (1) 1 and (2) 2 ug/mL.

- Immunocytochemistry

Immunocytochemistry of Jurkat cells with IFITM1 polyclonal antibody (Cat # PAB19260) at 20 ug/mL.

- Enzyme-linked Immunoabsorbent Assay

Gene Info — IFITM1

Entrez GeneID	8519
Protein Accession#	NP_003632
Gene Name	IFITM1
Gene Alias	9-27, CD225, IFI17, LEU13
Gene Description	interferon induced transmembrane protein 1 (9-27)
Omim ID	604456
Gene Ontology	Hyperlink
Other Designations	interferon-induced protein 17

Pathway

- [B cell receptor signaling pathway](#)

Disease

- [Genetic Predisposition to Disease](#)
- [Hepatitis C](#)
- [Ovarian Neoplasms](#)