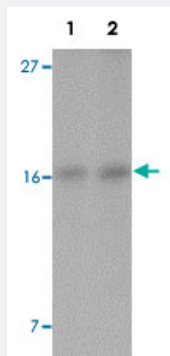


IFITM1 polyclonal antibody

Catalog # PAB19259

Size 100 ug

Applications



Western Blot (Cell lysate)

Western blot analysis of IFITM1 in Jurkat cell lysate with IFITM1 polyclonal antibody (Cat # PAB19259) at (1) 2.5 and (2) 5 ug/mL.

Specification

Product Description	Rabbit polyclonal antibody raised against synthetic peptide of IFITM1.
Immunogen	A synthetic peptide corresponding to 14 amino acids near C-terminus of human IFITM1.
Host	Rabbit
Reactivity	Human
Form	Liquid
Purification	Affinity purification
Concentration	1 mg/mL
Recommend Usage	Western blot (2.5-5 ug/mL) The optimal working dilution should be determined by the end user.
Storage Buffer	In PBS (0.02% sodium azide)
Storage Instruction	Store at 4°C for three months. For long term storage store at -20°C. Aliquot to avoid repeated freezing and thawing.

Note

This product contains sodium azide: a POISONOUS AND HAZARDOUS SUBSTANCE which should be handled by trained staff only.

Applications

- Western Blot (Cell lysate)

Western blot analysis of IFITM1 in Jurkat cell lysate with IFITM1 polyclonal antibody (Cat # PAB19259) at (1) 2.5 and (2) 5 ug/mL.

- Enzyme-linked Immunoabsorbent Assay

Gene Info — IFITM1

Entrez GeneID [8519](#)

Protein Accession# [NP_003632](#)

Gene Name IFITM1

Gene Alias 9-27, CD225, IFI17, LEU13

Gene Description interferon induced transmembrane protein 1 (9-27)

Omim ID [604456](#)

Gene Ontology [Hyperlink](#)

Other Designations interferon-induced protein 17

Pathway

- [B cell receptor signaling pathway](#)

Disease

- [Genetic Predisposition to Disease](#)
- [Hepatitis C](#)
- [Ovarian Neoplasms](#)