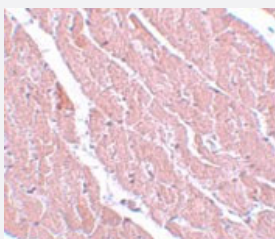


# C12orf44 polyclonal antibody

Catalog # PAB19257      Size 100 ug

## Applications



### Immunohistochemistry

Immunohistochemistry of mouse heart tissue with C12orf44 polyclonal antibody (Cat # PAB19257) at 5 ug/mL.

## Specification

<b>Product Description</b>	Rabbit polyclonal antibody rasied against synthetic peptide of C12orf44.
<b>Immunogen</b>	A synthetic peptide corresponding to 16 amino acids near internal region of human C12orf44.
<b>Host</b>	Rabbit
<b>Reactivity</b>	Human, Mouse, Rat
<b>Form</b>	Liquid
<b>Purification</b>	Peptide affinity purification
<b>Concentration</b>	1 mg/mL
<b>Recommend Usage</b>	Western Blot (1-2 ug/mL) Immunohistochemistry (5 ug/mL) The optimal working dilution should be determined by the end user.
<b>Storage Buffer</b>	In PBS (0.02% sodium azide)
<b>Storage Instruction</b>	Store at 4°C for three months. For long term storage store at -20°C. Aliquot to avoid repeated freezing and thawing.

**Note**

This product contains sodium azide: a POISONOUS AND HAZARDOUS SUBSTANCE which should be handled by trained staff only.

## Applications

- Western Blot
- Immunohistochemistry  
Immunohistochemistry of mouse heart tissue with C12orf44 polyclonal antibody (Cat # PAB19257) at 5 ug/mL.
- Enzyme-linked Immunoabsorbent Assay

## Gene Info — C12orf44

Entrez GeneID	<a href="#">60673</a>
Protein Accession#	<a href="#">NP_001092143</a>
Gene Name	C12orf44
Gene Alias	FLJ11773
Gene Description	chromosome 12 open reading frame 44
Gene Ontology	<a href="#">Hyperlink</a>
Other Designations	hypothetical protein LOC60673