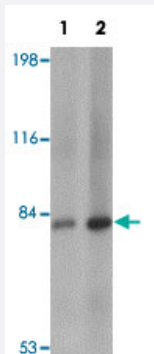


# RBBP8 polyclonal antibody

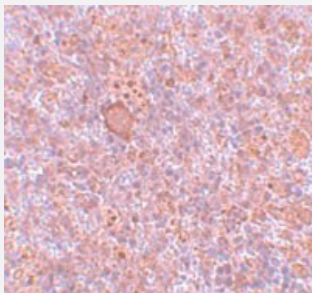
Catalog # PAB19252      Size 100 ug

## Applications



### Western Blot (Tissue lysate)

Western blot analysis of RBBP8 in mouse spleen tissue lysate with RBBP8 polyclonal antibody (Cat # PAB19252) at (1) 1 and (2) 2 ug/mL.



### Immunohistochemistry

Immunohistochemistry of rat spleen tissue with RBBP8 polyclonal antibody (Cat # PAB19252) at 5 ug/mL.

## Specification

<b>Product Description</b>	Rabbit polyclonal antibody raised against synthetic peptide of RBBP8.
<b>Immunogen</b>	A synthetic peptide corresponding to 14 amino acids near internal region of human RBBP8.
<b>Host</b>	Rabbit
<b>Reactivity</b>	Human, Mouse, Rat
<b>Form</b>	Liquid
<b>Purification</b>	Peptide affinity purification

Concentration	1 mg/mL
Recommend Usage	Western Blot (1-2 ug/mL) Immunohistochemistry (5 ug/mL) The optimal working dilution should be determined by the end user.
Storage Buffer	In PBS (0.02% sodium azide)
Storage Instruction	Store at 4°C for three months. For long term storage store at -20°C. Aliquot to avoid repeated freezing and thawing.
Note	This product contains sodium azide: a POISONOUS AND HAZARDOUS SUBSTANCE which should be handled by trained staff only.

## Applications

- Western Blot (Tissue lysate)

Western blot analysis of RBBP8 in mouse spleen tissue lysate with RBBP8 polyclonal antibody (Cat # PAB19252) at (1) 1 and (2) 2 ug/mL.

- Immunohistochemistry

Immunohistochemistry of rat spleen tissue with RBBP8 polyclonal antibody (Cat # PAB19252) at 5 ug/mL.

- Enzyme-linked Immunoabsorbent Assay

## Gene Info — RBBP8

Entrez GeneID	<a href="#">5932</a>
Protein Accession#	<a href="#">NP_976037</a>
Gene Name	RBBP8
Gene Alias	CTIP, RIM
Gene Description	retinoblastoma binding protein 8
Omim ID	<a href="#">604124</a>
Gene Ontology	<a href="#">Hyperlink</a>

**Gene Summary**

The protein encoded by this gene is a ubiquitously expressed nuclear protein. It is found among several proteins that bind directly to retinoblastoma protein, which regulates cell proliferation. This protein complexes with transcriptional co-repressor CTBP. It is also associated with BRCA1 and is thought to modulate the functions of BRCA1 in transcriptional regulation, DNA repair, and/or cell cycle checkpoint control. It is suggested that this gene may itself be a tumor suppressor acting in the same pathway as BRCA1. Three transcript variants encoding two different isoforms have been found for this gene. More transcript variants exist, but their full-length natures have not been determined. [provided by RefSeq]

**Other Designations**

CTBP-interacting protein|retinoblastoma-binding protein 8|retinoblastoma-interacting myosin-like

**Disease**

- [Adenocarcinoma](#)
- [Breast cancer](#)
- [Breast Neoplasms](#)
- [Diabetes Mellitus](#)
- [Genetic Predisposition to Disease](#)
- [Ovarian cancer](#)
- [Ovarian Neoplasms](#)
- [Pancreatic Neoplasms](#)
- [Retinoblastoma](#)