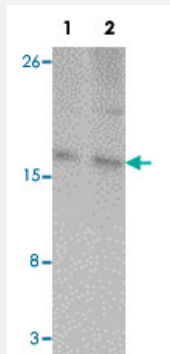


SUMO3 polyclonal antibody

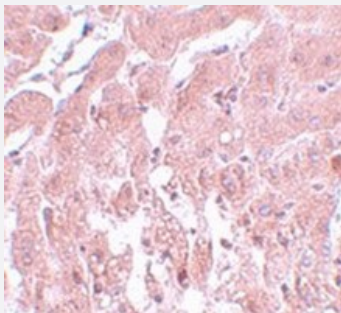
Catalog # PAB19249 Size 100 ug

Applications



Western Blot (Tissue lysate)

Western blot analysis of rat liver tissue with SUMO3 polyclonal antibody (Cat # PAB19249) at (Lane 1) 1 and (Lane 2) 2 ug/mL dilution.



Immunohistochemistry

Immunohistochemical staining of rat liver tissue with SUMO3 polyclonal antibody (Cat # PAB19249) at 5 ug/mL dilution.

Specification

Product Description	Rabbit polyclonal antibody raised against synthetic peptide of SUMO3.
Immunogen	A synthetic peptide corresponding to 13 amino acids near C-terminus of human SUMO3.
Host	Rabbit
Reactivity	Human, Mouse, Rat
Form	Liquid
Purification	Peptide affinity purification

Concentration	1 mg/mL
Recommend Usage	Western Blot (1-2 ug/mL) Immunohistochemistry (5 ug/mL) The optimal working dilution should be determined by the end user.
Storage Buffer	In PBS (0.02% sodium azide)
Storage Instruction	Store at 4°C for three months. For long term storage store at -20°C. Aliquot to avoid repeated freezing and thawing.
Note	This product contains sodium azide: a POISONOUS AND HAZARDOUS SUBSTANCE which should be handled by trained staff only.

Applications

- Western Blot (Tissue lysate)

Western blot analysis of rat liver tissue with SUMO3 polyclonal antibody (Cat # PAB19249) at (Lane 1) 1 and (Lane 2) 2 ug/mL dilution.

- Immunohistochemistry

Immunohistochemical staining of rat liver tissue with SUMO3 polyclonal antibody (Cat # PAB19249) at 5 ug/mL dilution.

- Enzyme-linked Immunoabsorbent Assay

Gene Info — SUMO3

Entrez GeneID	6612
Protein Accession#	NP_008867
Gene Name	SUMO3
Gene Alias	SMT3A, SMT3H1, SUMO-3
Gene Description	SMT3 suppressor of mif two 3 homolog 3 (S. cerevisiae)
Omim ID	602231
Gene Ontology	Hyperlink

Gene Summary

SUMO proteins, such as SUMO3, and ubiquitin (see MIM 191339) posttranslationally modify numerous cellular proteins and affect their metabolism and function. However, unlike ubiquitination, which targets proteins for degradation, sumoylation participates in a number of cellular processes, such as nuclear transport, transcriptional regulation, apoptosis, and protein stability (Su and Li, 2002 [PubMed 12383504]).[supplied by OMIM]

Other Designations

OTTHUMP00000115275|SMT3 suppressor of mif two 3 homolog 1|small ubiquitin-like modifier protein 3

Disease

- [Adenocarcinoma](#)
- [Genetic Predisposition to Disease](#)
- [Kidney Failure](#)
- [Pancreatic Neoplasms](#)