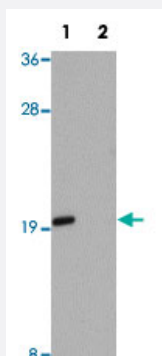


ANAPC13 polyclonal antibody

Catalog # PAB19241 Size 100 ug

Applications



Western Blot (Cell lysate)

Western blot analysis of Jurkat cells with ANAPC13 polyclonal antibody (Cat # PAB19241) at 1 ug/mL in (Lane 1) the absence and (Lane 2) the presence of blocking peptide.

Specification

Product Description	Rabbit polyclonal antibody raised against synthetic peptide of ANAPC13.
Immunogen	A synthetic peptide corresponding to 17 amino acids near internal region of human ANAPC13.
Host	Rabbit
Reactivity	Human, Mouse, Rat
Form	Liquid
Purification	Peptide affinity purification
Concentration	1 mg/mL
Recommend Usage	Western Blot (1 ug/mL) The optimal working dilution should be determined by the end user.
Storage Buffer	In PBS (0.02% sodium azide)
Storage Instruction	Store at 4°C for three months. For long term storage store at -20°C. Aliquot to avoid repeated freezing and thawing.

Note

This product contains sodium azide: a POISONOUS AND HAZARDOUS SUBSTANCE which should be handled by trained staff only.

Applications

- Western Blot (Cell lysate)

Western blot analysis of Jurkat cells with ANAPC13 polyclonal antibody (Cat # PAB19241) at 1 ug/mL in (Lane 1) the absence and (Lane 2) the presence of blocking peptide.

- Enzyme-linked Immunoabsorbent Assay

Gene Info — ANAPC13

Entrez GeneID	25847
---------------	-----------------------

Protein Accession#	NP_056206
--------------------	---------------------------

Gene Name	ANAPC13
-----------	---------

Gene Alias	APC13, DKFZp566D193, SWM1
------------	---------------------------

Gene Description	anaphase promoting complex subunit 13
------------------	---------------------------------------

Gene Ontology	Hyperlink
---------------	---------------------------

Gene Summary	This gene encodes a component of the anaphase promoting complex, a large ubiquitin-protein ligase that controls cell cycle progression by regulating the degradation of cell cycle regulators such as B-type cyclins. The encoded protein is evolutionarily conserved and is required for the integrity and ubiquitin ligase activity of the anaphase promoting complex. Pseudogenes and splice variants have been found for this gene; however, the biological validity of some of the splice variants has not been determined. [provided by RefSeq]
--------------	---

Other Designations	cyclosome subunit 13 homolog of yeast Swm1
--------------------	--

Pathway

- [Cell cycle](#)
- [Ubiquitin mediated proteolysis](#)

Disease

- [Crohn Disease](#)
- [Diabetes Mellitus](#)
- [Genetic Predisposition to Disease](#)
- [Growth Disorders](#)