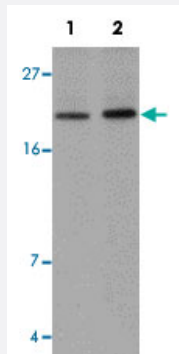


ANAPC10 polyclonal antibody

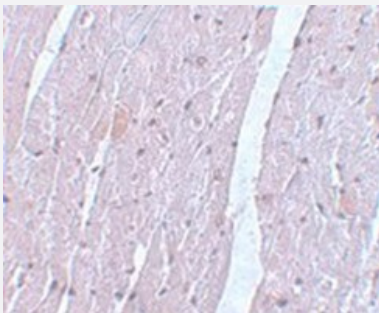
Catalog # PAB19239 Size 100 ug

Applications



Western Blot (Tissue lysate)

Western blot analysis of mouse heart tissue with ANAPC10 polyclonal antibody (Cat # PAB19239) at (Lane 1) 1 and (Lane 2) 2 ug/mL dilution.



Immunohistochemistry

Immunohistochemical staining of mouse heart tissue with ANAPC10 polyclonal antibody (Cat # PAB19239) at 5 ug/mL dilution.

Specification

Product Description	Rabbit polyclonal antibody rasied against synthetic peptide of ANAPC10.
Immunogen	A synthetic peptide corresponding to 16 amino acids near internal region of human ANAPC10.
Host	Rabbit
Reactivity	Human, Mouse, Rat
Form	Liquid
Purification	Peptide affinity purification

Concentration	1 mg/mL
Recommend Usage	Western Blot (1-2 ug/mL) Immunohistochemistry (5 ug/mL) The optimal working dilution should be determined by the end user.
Storage Buffer	In PBS (0.02% sodium azide)
Storage Instruction	Store at 4°C for three months. For long term storage store at -20°C. Aliquot to avoid repeated freezing and thawing.
Note	This product contains sodium azide: a POISONOUS AND HAZARDOUS SUBSTANCE which should be handled by trained staff only.

Applications

- Western Blot (Tissue lysate)

Western blot analysis of mouse heart tissue with ANAPC10 polyclonal antibody (Cat # PAB19239) at (Lane 1) 1 and (Lane 2) 2 ug/mL dilution.

- Immunohistochemistry

Immunohistochemical staining of mouse heart tissue with ANAPC10 polyclonal antibody (Cat # PAB19239) at 5 ug/mL dilution.

- Enzyme-linked Immunoabsorbent Assay

Gene Info — ANAPC10

Entrez GeneID	10393
Protein Accession#	EAX05052
Gene Name	ANAPC10
Gene Alias	APC10, DKFZp564L0562, DOC1
Gene Description	anaphase promoting complex subunit 10
Gene Ontology	Hyperlink
Other Designations	-

Pathway

- [Cell cycle](#)
- [Ubiquitin mediated proteolysis](#)