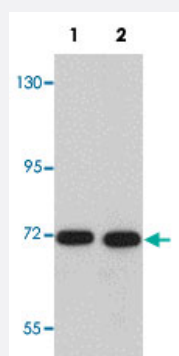


CDC16 polyclonal antibody

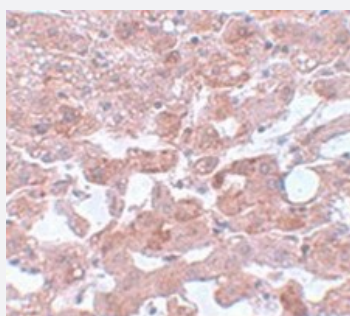
Catalog # PAB19236 Size 100 ug

Applications



Western Blot (Tissue lysate)

Western blot analysis of human liver tissue with CDC16 polyclonal antibody (Cat # PAB19236) at (Lane 1) 1 and (Lane 2) 2 ug/mL dilution.



Immunohistochemistry

Immunohistochemical staining of human liver tissue with CDC16 polyclonal antibody (Cat # PAB19236) at 5 ug/mL dilution.

Specification

Product Description	Rabbit polyclonal antibody raised against synthetic peptide of CDC16.
Immunogen	A synthetic peptide corresponding to 18 amino acids near N-terminus of human CDC16.
Host	Rabbit
Reactivity	Human, Mouse
Form	Liquid
Purification	Peptide affinity purification

Concentration	1 mg/mL
Recommend Usage	Western Blot (1-2 ug/mL) Immunohistochemistry (5 ug/mL) The optimal working dilution should be determined by the end user.
Storage Buffer	In PBS (0.02% sodium azide)
Storage Instruction	Store at 4°C for three months. For long term storage store at -20°C. Aliquot to avoid repeated freezing and thawing.
Note	This product contains sodium azide: a POISONOUS AND HAZARDOUS SUBSTANCE which should be handled by trained staff only.

Applications

- Western Blot (Tissue lysate)

Western blot analysis of human liver tissue with CDC16 polyclonal antibody (Cat # PAB19236) at (Lane 1) 1 and (Lane 2) 2 ug/mL dilution.

- Immunohistochemistry

Immunohistochemical staining of human liver tissue with CDC16 polyclonal antibody (Cat # PAB19236) at 5 ug/mL dilution.

- Enzyme-linked Immunoabsorbent Assay

Gene Info — CDC16

Entrez GeneID	8881
Protein Accession#	NP_003894
Gene Name	CDC16
Gene Alias	APC6
Gene Description	cell division cycle 16 homolog (S. cerevisiae)
Omim ID	603461
Gene Ontology	Hyperlink

Gene Summary

This gene encodes a component protein of the APC complex, which is composed of eight proteins and functions as a protein ubiquitin ligase. The APC complex is a cyclin degradation system that governs exit from mitosis. Each component protein of the APC complex is highly conserved among eukaryotic organisms. This protein and two other APC complex proteins, CDC23 and CDC27, contain a tetratricopeptide repeat (TPR), a protein domain that may be involved in protein-protein interaction. Multiple alternatively spliced variants, encoding the same protein, have been identified. [provided by RefSeq]

Other Designations

anaphase-promoting complex, subunit 6

Pathway

- [Cell cycle](#)
- [Ubiquitin mediated proteolysis](#)

Disease

- [Adenocarcinoma](#)
- [Genetic Predisposition to Disease](#)
- [Pancreatic Neoplasms](#)