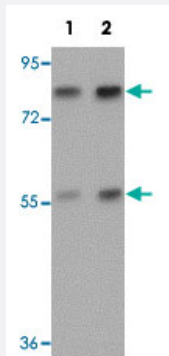


ANAPC4 polyclonal antibody

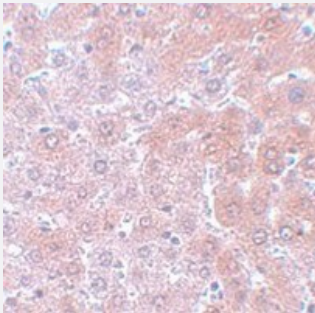
Catalog # PAB19234 Size 100 ug

Applications



Western Blot (Tissue lysate)

Western blot analysis of mouse liver tissue with ANAPC4 polyclonal antibody (Cat # PAB19234) at (Lane 1) 1 and (Lane 2) 2 ug/mL dilution.



Immunohistochemistry

Immunohistochemical staining of rat liver tissue with ANAPC4 polyclonal antibody (Cat # PAB19234) at 5 ug/mL dilution.

Specification

Product Description	Rabbit polyclonal antibody raised against synthetic peptide of ANAPC4.
Immunogen	A synthetic peptide corresponding to 14 amino acids near N-terminus of human ANAPC4.
Host	Rabbit
Reactivity	Human, Mouse, Rat
Form	Liquid
Purification	Peptide affinity purification

Concentration	1 mg/mL
Recommend Usage	Western Blot (1-2 ug/mL) Immunohistochemistry (5 ug/mL) The optimal working dilution should be determined by the end user.
Storage Buffer	In PBS (0.02% sodium azide)
Storage Instruction	Store at 4°C for three months. For long term storage store at -20°C. Aliquot to avoid repeated freezing and thawing.
Note	This product contains sodium azide: a POISONOUS AND HAZARDOUS SUBSTANCE which should be handled by trained staff only.

Applications

- Western Blot (Tissue lysate)

Western blot analysis of mouse liver tissue with ANAPC4 polyclonal antibody (Cat # PAB19234) at (Lane 1) 1 and (Lane 2) 2 ug/mL dilution.

- Immunohistochemistry

Immunohistochemical staining of rat liver tissue with ANAPC4 polyclonal antibody (Cat # PAB19234) at 5 ug/mL dilution.

- Enzyme-linked Immunoabsorbent Assay

Gene Info — ANAPC4

Entrez GeneID	29945
Protein Accession#	Q9UJX5
Gene Name	ANAPC4
Gene Alias	APC4
Gene Description	anaphase promoting complex subunit 4
Omim ID	606947
Gene Ontology	Hyperlink

Gene Summary

A large protein complex, termed the anaphase-promoting complex (APC), or the cyclosome, promotes metaphase-anaphase transition by ubiquitinating its specific substrates such as mitotic cyclins and anaphase inhibitor, which are subsequently degraded by the 26S proteasome. Biochemical studies have shown that the vertebrate APC contains eight subunits. The composition of the APC is highly conserved in organisms from yeast to humans. The exact function of this gene product is not known. [provided by RefSeq]

Other Designations

anaphase-promoting complex subunit 4

Pathway

- [Cell cycle](#)
- [Ubiquitin mediated proteolysis](#)