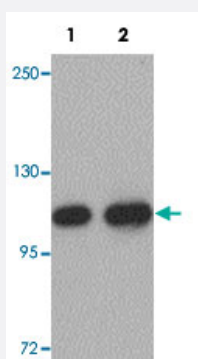


# CDC27 polyclonal antibody

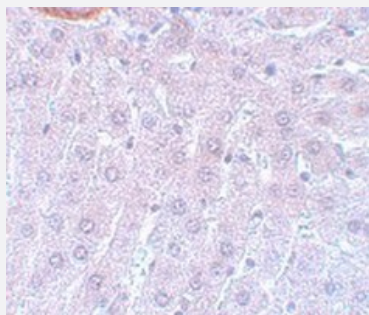
Catalog # PAB19233      Size 100 ug

## Applications



### Western Blot (Tissue lysate)

Western blot analysis of mouse liver tissue with CDC27 polyclonal antibody (Cat # PAB19233) at (Lane 1) 1 and (Lane 2) 2 ug/mL dilution.



### Immunohistochemistry

Immunohistochemical staining of rat liver tissue with CDC27 polyclonal antibody (Cat # PAB19233) at 5 ug/mL dilution.

## Specification

<b>Product Description</b>	Rabbit polyclonal antibody raised against synthetic peptide of CDC27.
<b>Immunogen</b>	A synthetic peptide corresponding to 19 amino acids near C-terminus of human CDC27.
<b>Host</b>	Rabbit
<b>Reactivity</b>	Human, Mouse, Rat
<b>Form</b>	Liquid
<b>Purification</b>	Peptide affinity purification

Concentration	1 mg/mL
Recommend Usage	Western Blot (1-2 ug/mL) Immunohistochemistry (5 ug/mL) The optimal working dilution should be determined by the end user.
Storage Buffer	In PBS (0.02% sodium azide)
Storage Instruction	Store at 4°C for three months. For long term storage store at -20°C. Aliquot to avoid repeated freezing and thawing.
Note	This product contains sodium azide: a POISONOUS AND HAZARDOUS SUBSTANCE which should be handled by trained staff only.

## Applications

- Western Blot (Tissue lysate)

Western blot analysis of mouse liver tissue with CDC27 polyclonal antibody (Cat # PAB19233) at (Lane 1) 1 and (Lane 2) 2 ug/mL dilution.

- Immunohistochemistry

Immunohistochemical staining of rat liver tissue with CDC27 polyclonal antibody (Cat # PAB19233) at 5 ug/mL dilution.

- Enzyme-linked Immunoabsorbent Assay

## Gene Info — CDC27

Entrez GeneID	<a href="#">996</a>
Protein Accession#	<a href="#">NP_001247</a>
Gene Name	CDC27
Gene Alias	APC3, CDC27Hs, D0S1430E, D17S978E, HNUC
Gene Description	cell division cycle 27 homolog (S. cerevisiae)
Omim ID	<a href="#">116946</a>
Gene Ontology	<a href="#">Hyperlink</a>

**Gene Summary**

The protein encoded by this gene shares strong similarity with *Saccharomyces cerevisiae* protein Cdc27, and the gene product of *Schizosaccharomyces pombe* nuc 2. This protein is a component of anaphase-promoting complex (APC), which is composed of eight protein subunits and highly conserved in eucaryotic cells. APC catalyzes the formation of cyclin B-ubiquitin conjugate that is responsible for the ubiquitin-mediated proteolysis of B-type cyclins. This protein and 3 other members of the APC complex contain the TPR (tetratricopeptide repeat), a protein domain important for protein-protein interaction. This protein was shown to interact with mitotic checkpoint proteins including Mad2, p55CDC and BUBR1, and thus may be involved in controlling the timing of mitosis. Alternatively spliced transcript variants encoding different isoforms have been found for this gene. [provided by RefSeq]

**Other Designations**

anaphase-promoting complex, protein 3|cell division cycle protein 27|nuc2 homolog

**Pathway**

- [Cell cycle](#)
- [Ubiquitin mediated proteolysis](#)